

INTRODUCTION



IN SUCH A COMPLEX MARKET, YOUR CHOICE OF FIRE PROTECTION SUPPLIER IS CRITICAL...

The fire protection market has become very complicated over the last few years. You need suppliers who have the experience and technical expertise to give you the right advice on products and applications, backed up by unrivalled service and delivery.

It's easy to do business with our Fire Protection Service

An extensive range of Fire Protection materials and complementary accessories from major manufacturers includes products for structural steel, partitioning, ductwork, wall/roof linings, ceilings and intumescent fire stopping. We also stock a wide range of ancillary items such as fixings and steel angles. So, let us advise you which metal systems to use or which fixings and fastenings you need for your boards and panels. Our unique 'one stop shop' package service offers everything you need to get the job done, and will save you time and effort.

Excellent ex-stock delivery to site/premises

With a fleet of specialist delivery vehicles and the most sophisticated computer systems working together, we ensure that you get delivery of your products exactly when and where you want them. Professional and efficient scheduling means that the risks of damage and pilfering are greatly reduced. Moffett Mounty off-loading vehicles are available at our branches. These provide considerable benefits, where there is limited availability of off-loading facilities or difficult site access.

Not just Fire Protection

As well as Fire Protection Products, we stock brand name structural and industrial/h&v insulation materials to meet every application. Plus dry lining & partitioning and a wide range of building products.



Prices charged are those ruling at date of despatch and whilst information contained in this Price List is believed to be accurate at the time of printing, you are advised to contact your local branch for up-to-date information.

The company reserves the right to alter or amend the products without notice as our policy is one of constant improvement. All products are sold subject to our standard conditions of sale which are available on request.

Health and Safety at Work Act 1974/Section 3. Consumer Protection Act 1987.
COSHH Data Sheets are provided by request to the supplying branch.

CONTENTS

PROMAT FIRE PROTECTION

Promat Supalux®	4
Promat Supalux® Door Facings	4
Promat Supalux® Bevelled Edge Ceiling Panels	4
Promat Supalux® Thatch	4
Impregnated Promat Supalux®	4
Promat Flamebraker™ Supalux®	4
Promat Flamebraker™ Masterboard®	4
Promat Flamebraker™ Grid	4
Promat Masterboard®	5
Promat Masterboard® Door Facings	5
Promat Masterboard® Rebated Edge	5
Promina® - M	5
Promat Vermiculux®	5
Promat Vicutube®	5
Promat Vicubond® WR Adhesive	5
Promat TD Board® - Plain (Formerly Promalit)	8
Promat TD Board® - Foil Faced (Formerly Promalit)	8
Promat TD Board® - Tissue Faced	8
Promat Promatec® - L500	8
Promat Promatec® - 250	10
Promat Vicuclad®	10
Promat TL Board®	10
Promat TLFR Board®	10
Fixing Guide	10

PROMAT FIRE STOPPING

Promat Promaseal® Fire Barrier	11
Promat Promaseal® Fire Barrier Coating	11
Promat Promaseal® Fire Compound	11
Promat Promaseal® Fire Compound - Extra Strength	11
Promat Promaseal® Intumescent Acrylic Sealant	11
Promat Promaseal® Silicone Sealant	11
Promat Promaseal® RSB	12
Promat Promaseal® Fire Pillows	12
Promat Promaseal® Pipewrap	12
Promat Promaseal® Unicollars®	12
Quantity of Segments per Pipe	12
Promat Promaseal® Expansion Joint Strips	12

AIM

AIM Fire Stop Strips	13
AIM Fire Stop Blocks	13
AIM Wall Cavity Fire Barrier	13
AIM Raised Access Floor Fire Barrier	13
AIM Partition Head Barrier	13
AIM Party Wall Fire Closer	13
AIM Ventilated Fire Barrier	13

BRITISH GYPSUM SPECIALIST BOARDS

Glasroc F Multiboard	14
Glasroc F Firecase	14
Glasroc F Soffitline	14
Flamelyner Components	14
Glasroc F Flameline	14
Glasroc F Firecase Screws	14

ROCKWOOL FIREPRO

Rockwool High Impact Soffit Liner	16
Liner Firestop 2	16
Fire Barrier	18
SP Firestop Slabs	18
SP Firestop Fixing Brackets	18
Spiral Screws	18
Beamclad Clips	18
Beamclad Washers	18
Firepro Glue	18
Beamclad	18
Firestop Compound	18
2 Hour Firestop Pipe Collars	18
4 Hour Firestop Pipe Collars	19
Ablative Liquid	19
2 Hour and 4 Hour Ablative Batts	19
2 Hour Intumescent Pipe Wraps	19
4 Hour Intumescent Pipe Wraps	19
Insulated Fire Sleeves	19
Intumescent Pillow	19
Acoustic Intumescent Sealant	19

SPEEDLINE

Speedline Soffit Liner	20
Speedline Access Panels	20
Speedline Acoustic Firecaps	20

EUROFORM VERSA BUILDING BOARDS

Versapanel® - Class 0 Cement Bonded Particle Board	21
Versafire® - A1-Non-Combustible Building Board	21
Versaliner™ JPM - Class 0 Gypsum Fireboard	21
Versa Weather Pro-L™ - Class 0 Calcium Silicate Board	21
Versa Soben FP-900™ - A1-Non-Combustible Calcium Silicate Board	21
Rendaboard™ - Class 0 Building Board	21
Versatecpor A	21
Versatecpor B	21

FIREHALT

Firehalt Fire Curtain & Accessories	22
Firehalt Curtain Fixings	22
Penetration Accessories	22
Firehalt Gap Seal Tape	22

3M™ SCOTCHKOTE™ LIQUID COATING

3M Intumescent Paint	23
----------------------	----

KNAUF INSULATION

RocksilK Firetech Slab - Plain	24
RocksilK Firetech Accessories	24
Knauf Fireboard	24
Knauf Fireboard Accessories	24
RocksilK Smoke and Fire Barrier	24
RocksilK Firetech Dry Fix Noggin Slab	24
RocksilK Pyroduct Slab	24

TENMAT FIRE STOPPING

Pipe Fire Sleeves	26
Fire & Acoustic Cable Basket Sleeves	26
Switch Box Covers & Inserts	26
Vent Duct Fire Sleeves	27
Vent Duct Wraps	27
Ceiling Fan Fire Sleeves	27
Ventilated Fire Barriers	27
Light Covers & Fire Hoods	27

FIRESTEM FIRE STOP PENETRATING SEALS

Firestem Intumescent Mastic	28
Firestem Fire Barriers	28
Firestem Ablative Coatings	28
Firestem Fire Cement	28
Firestem Pipe Collars	28
Firestem Pipe Wraps	29
Firestem Fire Pillows	29
Firestem Expansion Joints	29
Firestem Doorstrips	29

A/V TABLES

30-32

BOARD THICKNESS (REQUIRED FOR STRUCTURAL STEEL)

Promat Vermiculux®	33
Promat Supalux® - Limiting Steel Temperature 550°C	33
Promat Promatec® - 250	33
Promat Promatec® - 250	33
Glasroc F	33
Knauf Fireboard	34
Knauf RocksilK Firetech 160 for Steel Columns	34
Knauf RocksilK Firetech 160 for Steel Beams	34
Knauf RocksilK Firetech 150 for Steel Columns	34
Rockwool Beamclad 150 for Steel Beams	34
Promat TD Board® - Table 1	35
Promat TD Board® - Table 2	35
Promat Vicutube®	35



PROMAT

PROMAT SUPALUX®

Up to 240 minutes fire protection on walls, ceilings, ducts and partitions.

CODE	THICKNESS (mm)	LENGTH (mm)	WIDTH (mm)	BOARDS (per pallet)	£ PRICE (per board)	£ PRICE (per m ²)
30020 1004	6	2440	1220	50	54.09	18.17
30020 1006	6	2500	1200	50	54.49	18.17
30020 2200	9	2440	1220	40	80.45	27.03
30020 1805	9	2500	1200	40	81.08	27.03
30020 3600	12	2440	1220	30	106.54	35.58
30020 3595	12	2500	1200	30	106.74	35.58
30020 4154	15	2440	1220	25	146.47	49.20
30020 4156	15	2500	1200	25	147.60	49.20
30020 4204	20	2500	1250	20	205.03	65.60
30020 4254	25	2500	1250	15	256.27	82.01

NOTE: Prices for other sizes of Supalux are available on request.

PROMAT SUPALUX® DOOR FACINGS

CODE	THICKNESS (mm)	LENGTH (mm)	WIDTH (mm)	BOARDS (per pallet)	£ PRICE (per board)	£ PRICE (per m ²)
30030 0028	6	2134	915	50	47.29	24.22
30030 0061	9	2134	915	40	70.28	35.99

PROMAT SUPALUX® BEVELLED EDGE CEILING PANELS

CODE	THICKNESS (mm)	LENGTH (mm)	WIDTH (mm)	£ PRICE PER TILE	£ PRICE (per m ²)
30045 0508	9	600	600	12.08	33.56
30045 060X	9	610	610	12.49	33.56
30045 0756	9	1200	600	24.15	33.56
30045 0789	9	1220	610	24.96	33.56
30045 1001	9	1200	1200	48.33	33.56
30045 1002	9	1220	1220	49.95	33.56
30045 125X	12	600	600	65.21	181.14

PROMAT SUPALUX® THATCH

CODE	THICKNESS (mm)	LENGTH (mm)	WIDTH (mm)	BOARDS (per pallet)	£ PRICE (per board)	£ PRICE (per m ²)
30020 1780	9	1220	1200	80	34.98	23.89
30020 3604	12	1220	1200	60	46.34	31.65

IMPREGNATED PROMAT SUPALUX®

CODE	THICKNESS (mm)	LENGTH (mm)	WIDTH (mm)	BOARDS (per pallet)	£ PRICE (per board)	£ PRICE (per m ²)
30020 1806	9	2500	1200	40	85.15	28.38
30020 4157	15	2500	1200	25	POA	POA

PROMAT FLAMEBRAKER™ SUPALUX®

CODE	THICKNESS (mm)	LENGTH (mm)	WIDTH (mm)	£ PRICE (per board)	£ PRICE (per m ²)
30025 0702	6	1200	600	13.14	18.25
30025 0757	6	1800	600	19.72	18.25
30025 0804	6	2400	600	26.28	18.25
30025 3011	9	1200	600	19.55	27.15
30025 3755	9	1800	600	29.33	27.15
30025 4000	9	2400	600	39.10	27.15

PROMAT FLAMEBRAKER™ MASTERBOARD®

CODE	THICKNESS (mm)	LENGTH (mm)	WIDTH (mm)	£ PRICE (per board)	£ PRICE (per m ²)
32060 1184	6	1800	600	10.84	10.04
32060 1242		2400	600	15.81	10.98

PROMAT FLAMEBRAKER™ GRID

CODE	LENGTH (mm)	WIDTH (mm)	HEIGHT (mm)	DESCRIPTION	WT/CARTON KG	NO. (per carton)	£ PRICE (per pack)	£ PRICE (per lm)
35095 0058	3600	35	35	Galv. Main Tee	33	20	159.74	2.22
35095 015X	603	35	35	Galv. Cross Tee	12	40	58.47	2.42
35095 0251	3600	25	25	Galv. 90 Angle	24	20	115.73	1.61
35095 0557	300	18	-	Fixing Strap	8	50	19.90	-
35095 0604	450	18	-	Fixing Strap	12	50	20.48	-
35095 0659	-	-	-	Spring Wedge	5	1000	235.86	-
35095 0750	140	15	-	Insulation Clip	3	200	71.94	-



PROMAT MASTERBOARD®

CODE	THICKNESS (mm)	LENGTH (mm)	WIDTH (mm)	BOARDS (per pallet)	M ² (per pallet)	£ PRICE (per board)	£ PRICE (per m ²)
32010 1002	6	2440	1220	50	148.84	32.69	10.98
32010 1501	9	2440	1220	40	119.07	69.04	23.19
32010 1964	12	2440	1220	30	89.30	91.07	30.58

NOTE: Prices for other sizes of Masterboard are available on request.

PROMAT MASTERBOARD® DOOR FACINGS

CODE	THICKNESS (mm)	LENGTH (mm)	WIDTH (mm)	BOARDS (per pallet)	M ² (per pallet)	£ PRICE (per board)	£ PRICE (per m ²)
32020 0026	6	2134	914	50		32.64	16.74

PROMAT MASTERBOARD® REBATED EDGE

CODE	THICKNESS (mm)	LENGTH (mm)	WIDTH (mm)	BOARDS (per pallet)	M ² (per pallet)	£ PRICE (per board)	£ PRICE (per m ²)
32010 1502	9	2440	1220	40		80.49	27.04

PROMINA® - M

CODE	THICKNESS (mm)	LENGTH (mm)	WIDTH (mm)	BOARDS (per pallet)	M ² (per pallet)	£ PRICE (per board)	£ PRICE (per m ²)
32107 0600	6	2400	1200	60			7.00

PROMAT VERMICULUX®

Fire resistant calcium silicate board capable of 240 minutes fire protection to structural steel.

CODE	THICKNESS (mm)	LENGTH (mm)	WIDTH (mm)	BOARDS (per pallet)	£ PRICE (per board)	£ PRICE (per m ²)
35010 0224	20	1220	1220	40	36.01	24.19
35010 0279	25	1220	1220	30	43.98	29.55
35010 0326	30	1220	1220	26	57.37	38.54
35010 0370	35	1220	1220	22	70.84	47.59
35010 0428	40	1220	1220	20	89.14	59.89
35010 0472	45	1220	1220	17	107.67	72.34
35010 052X	50	1220	1220	15	118.67	79.73
35010 0574	55	1220	1220	14	130.38	87.60
35010 0621	60	1220	1220	13	141.49	95.06

1220mm x 1220mm rebated on opposite edges.

PROMAT VICUTUBE®

Exfoliated vermiculite for steelwork, plastic or gas pipes.

CODE	WALL THICKNESS (mm)	INTERNAL DIAMETER (mm)	SECTIONS (per pallet)	£ PRICE (per semi circular section)
37013 210X	30	60	240	6.72
37013 2201	30	76	220	7.07
37013 2303	30	89	200	7.43
37013 2405	30	114	114	8.86
37013 2460	30	140	100	10.37
37013 2482	30	168	100	12.18
37013 2493	30	219	80	14.09
37013 2507	40	60	180	8.01
37013 2609	40	76	150	8.42
37013 2700	40	89	150	8.86
37013 2802	40	114	100	10.54
37013 2904	40	140	72	12.47
37013 3102	40	168	72	14.48
37013 3109	40	194	72	15.62
37013 3204	40	219	72	17.68
37013 3210	40	245	54	19.13
37013 3215	40	273	48	20.44
37013 342X	50	60	180	10.42
37013 3430	50	76	100	10.94
37013 3441	50	89	76	11.67
37013 3452	50	114	72	14.04

NOTE: Carriage charge may apply (Sections are 667mm long)

PROMAT VICUBOND® WR ADHESIVE

CODE	DESCRIPTION	SECTIONS (per pallet)	£ PRICE (per drum)
37020 0108	10 Litre Drum	25	46.05



Application		Promat Products and Fire Ratings			
INTERNAL WALLS & PARTITIONS		Promat SUPALUX® Up to 240 minutes	Promat MASTERBOARD® Up to 30 minutes		
FLOORS & CEILINGS		Promat SUPALUX® Up to 240 minutes	Promat MASTERBOARD® Up to 30 minutes		
CAVITY BARRIERS		Promat SUPALUX® Up to 60 minutes			
STRUCTURAL STEELWORK		Promat VERMICULUX® Up to 240 minutes	Promat PROMATECT®-250 Up to 150 minutes	Promat TD Board® Up to 240 minutes	Promat VICUTUBE® Up to 120 minutes
CONCRETE STRUCTURES		Promat VERMICULUX® Up to 240 minutes			
EXTERNAL WALLS		Promat SUPALUX® Up to 120 minutes	Promat MASTERBOARD® Up to 60 minutes		
DUCTING		Promat VICUCLAD® Up to 240 minutes	Promat PROMATECT®-L500 Up to 240 minutes		
SERVICES (CABLES & PIPES)		Promat SUPALUX® Up to 240 minutes	Promat PROMATECT®-L500 Up to 240 minutes		
THERMAL UPGRADING		Promat® TL Board Upgrading Thermal Insulation			

FIRE STOPPING		Promat PROMASEAL® Fire Barrier Up to 240 minutes		Promat PROMASEAL® Fire Compound and Fire Compound Extra Strength Up to 240 minutes
		Promat PROMASEAL® RSB Up to 60 minutes (integrity only)		Promat PROMASEAL® Intumescent Acrylic Sealant and Silicone Sealant Up to 240 minutes
		Promat PROMASEAL® Pipewrap Up to 240 minutes		Promat PROMASEAL® UniCollar® Up to 240 minutes
		Promat PROMASEAL® Fire Pillows Up to 120 minutes		Promat PROMASEAL® Expansion Joint Strip Up to 240 minutes

Leading the Way

in Fire Protection Boards

Promat SUPALUX® has been the market-leading fire protection board in the UK for more than 30 years. It's a strong, lightweight, non-combustible building board which is fully certified for up to 240 minutes fire resistance and fully supported by Promat's technical expertise.

- Up to 240 minutes fire resistance
- Strong, lightweight and non-combustible
- Extensive, independent testing and third party certification
- Class 0 Buildings Regulations classification
- Moisture resistant
- Impact resistant
- Easy to work, fix and decorate
- Full technical support

For more information, visit www.promat.co.uk/supalux or call our Technical Services team on +44 (0) 1344 381400



SUPALUX®
Specified for a reason



PROMAT

PROMAT TD BOARD® - PLAIN

CODE	THICKNESS (mm)	LENGTH (mm)	WIDTH (mm)	BOARDS (per pallet)	M ² (per pallet)	£ PRICE (per board)	£ PRICE (per m ²)
36083 0254	25	2000	1200	45	86.4	10.25	4.27
36083 0304	30	2000	1200	40	77.76	15.22	6.34
36083 0354	35	2000	1200	32	64.8	18.67	7.78
36083 0404	40	2000	1200	30	56.16	20.28	8.45
36083 0504	50	2000	1200	24	47.52	25.42	10.59
36083 0600	60	2000	1200	20	48	31.96	13.32

PROMAT TD BOARD® - FOIL FACED

CODE	THICKNESS (mm)	LENGTH (mm)	WIDTH (mm)	BOARDS (per pallet)	M ² (per pallet)	£ PRICE (per board)	£ PRICE (per m ²)
36083 0200	25	2000	1200	45	86.4	15.31	6.38
36083 0308	30	2000	1200	40	77.76	20.42	8.51
36083 0360	35	2000	1200	32	64.8	24.12	10.05
36083 0406	40	2000	1200	30	56.16	25.51	10.63
36083 0510	50	2000	1200	24	47.52	30.65	12.77
36083 0601	60	2000	1200	20	48	37.42	15.59

PROMAT TD BOARD® - TISSUE FACED

CODE	THICKNESS (mm)	LENGTH (mm)	WIDTH (mm)	M ² (per pallet)	£ PRICE (per board)	£ PRICE (per m ²)
36083 0202	25	2000	1200	45	13.70	5.71
36083 0306	30	2000	1200	40	18.79	7.83
36083 0359	35	2000	1200	32	22.42	9.34
36083 0407	40	2000	1200	30	23.88	9.95
36083 0509	50	2000	1200	24	29.02	12.09
36083 0601	60	2000	1200	20	35.69	14.87

PROMAT PROMATECT® - L500

CODE	THICKNESS (mm)	LENGTH (mm)	WIDTH (mm)	£ PRICE (per board)	£ PRICE (per m ²)
36078 0205	20	2500	1200	127.08	42.36
36078 0255	25	2500	1200	144.20	48.07
36078 0305	30	2500	1200	173.24	57.75
36078 0355	35	2500	1200	199.01	66.34
36078 0405	40	2500	1200	238.95	79.65
36078 0525	50	2500	1200	349.05	116.35
36078 0527	52	2500	1200	363.04	121.01



NEW

PROMINA[®]-M

The new 4-in-1 multi-performance board.

PROMINA[®]-M



**FIRE
PROTECTION**



**MOISTURE
RESISTANCE**



**IMPACT
RESISTANCE**



**ACOUSTIC
CONTROL**



Fire Protection

Up to 30 minutes fire protection - A1 non-combustible material



Moisture Resistance

For high humidity application - Semi-exposed applications



Impact Resistance

For heavy duty areas - High dimensional stability



Acoustic Control

Good sound insulating properties

PROMAT PROMATECT® - 250

Board for fire protection of structural steelwork.

CODE	THICKNESS (mm)	LENGTH (mm)	WIDTH (mm)	STACK QUANTITY	£ PRICE (per board)	£ PRICE (per m ²)
36079 0126	12	2500	1200	30	50.96	16.99
36079 0156	15	2500	1200	30	66.55	22.18
36079 0186	18	2500	1200	25	83.87	27.96
36079 0206	20	2500	1200	25	93.68	31.23
36079 0226	22	2500	1200	25	103.59	34.53
36079 0256	25	2500	1200	20	123.30	41.10
36079 0300	30	2500	1200	15	142.48	47.49

PROMAT VICUCLAD®

CODE	THICKNESS (mm)	LENGTH (mm)	WIDTH (mm)	BOARDS (per pallet)	£ PRICE (per board)	£ PRICE (per m ²)
37010 0180	18	1000	610	120	14.13	23.16
37010 025X	25	1000	610	88	15.29	25.07
37010 0307	30	1000	610	72	17.85	29.33
37010 0351	35	1000	610	60	20.40	33.44
37010 0409	40	1000	610	54	25.89	42.44
37010 0453	45	1000	610	48	31.34	51.38
37010 0500	50	1000	610	42	38.19	62.61
37010 0555	55	1000	610	40	45.04	73.84
37010 0602	60	1000	610	34	50.51	82.80
37010 0759	65	1000	610	32	56.02	91.84
37010 0781	70	1000	610	30	59.33	97.26

PROMAT TL BOARD®

Bevelled edge calcium silicate board bonded to phenolic insulation for thermal insulation of concrete soffits.

CODE	THICKNESS (mm)	STACK QUANTITY	£ PRICE (per board)	£ PRICE (per m ²)
32103 0565	56	17	97.01	33.68
32103 0664	66	15	107.53	37.33
32103 0764	76	13	120.78	41.93
32103 0864	86	11	135.09	46.91
32103 0964	96	10	154.28	53.56
32103 1064	106	9	168.58	58.53
32103 1164	116	8	POA	POA

All boards are 2397mm x 1197mm.

PROMAT TLFR BOARD®

CODE	THICKNESS (mm)	LENGTH (mm)	WIDTH (mm)	BOARDS (per pallet)	£ PRICE (per board)	£ PRICE (per m ²)
32100 1360	136	1200	600	16		25.36
32100 1660	166	1200	600	14		33.26

FIXING GUIDE

CEILING PANEL SIZE (mm)	NO. FIXING HOLES (per panel)
600 x 600	6 or 8
1200 x 600	12
1200 x 1200	19



PROMAT FIRE STOPPING

11

PROMAT PROMASEAL® FIRE BARRIER

50mm thick slab of mineral fibre with white coating.

Up to 120 minutes can be achieved with one layer & 240 minutes with 2 layers in floors & walls.

CODE	WIDTH (mm)	LENGTH (mm)	QUANTITY (per pallet)	£ PRICE EACH
37021 3622	1200	600	40	28.88

PROMAT PROMASEAL® FIRE BARRIER COATING

CODE	QUANTITY (per tub)	£ PRICE (per tub)
37021 1305	10kg	34.42

PROMAT PROMASEAL® FIRE COMPOUND

For fire sealing around service penetrations in walls & floors.

CODE	VOLUME (mm)	QUANTITY (per pallet)	£ PRICE (per bag)
37021 0501	25kg	40	22.27

PROMAT PROMASEAL® FIRE COMPOUND - EXTRA STRENGTH

CODE	VOLUME (mm)	QUANTITY (per pallet)	£ PRICE (per bag)
37021 0495	20kg	50	18.45

PROMAT PROMASEAL® INTUMESCENT ACRYLIC SEALANT

Water based acrylic mastic for sealing holes up to 35mm wide.

CODE	COLOUR	CARTRIDGE	BOX QUANTITY	PALLET QUANTITY	£ PRICE (per box)
37021 0402	Grey	310	12	1536 Tubes/128 Boxes	29.26
37021 0403	White	310	12	1536 Tubes/128 Boxes	29.26

PROMAT PROMASEAL® SILICONE SEALANT

Fire protection mastic for sealing small gaps particularly for high ambient temperatures & water exposure.

CODE	COLOUR	CARTRIDGE	BOX QUANTITY	PALLET QUANTITY	£ PRICE (per box)
37021 0311	Grey	310	12	1200/100 Boxes	93.29
37021 0312	White	310	12	1200/100 Boxes	93.29



PROMAT FIRE STOPPING

PROMAT PROMASEAL® RSB

Prevents the passage of fire in the void between a rain screen system & the substrate.

CODE	SIZE (mm)	£ PRICE (per m)
36089	100	45.90
36089	125	49.42
36089	150	52.38

PROMAT PROMASEAL® FIRE PILLOWS

Bags containing intumescent material & additives for service openings.

CODE	DESCRIPTION	SIZE (mm)	PILLOW (per box)	£ PRICE (per box)
37021 4301	Large	330 x 200 x 25	50	POA
37021 4302	Small	330 x 200 x 45	25	POA
37021 4300	Finger	300 x 100 x 35	50	POA

PROMAT PROMASEAL® PIPEWRAP

Wrapped around plastic pipes they can achieve fire resistance of up to 240 minutes.

CODE	SIZE (mm)	£ PRICE (per m)
37021 2024	55	4.78
37021 2029	82	5.30
37021 2034	110	6.83
37021 2039	160	15.92

PROMAT PROMASEAL® UNICOLLARS®

Protects plastic pipes which pass through fire rated walls & floors.
Supplied in continuous strip form which is cut to length & attached to wall or floor.

CODE	LENGTH (mm)	QUANTITY (per box)	£ PRICE (per box)
37021 1901	2250	1	59.25

Each length has 146 segments. One length is sufficient for 5 x 110mm collars.

QUANTITY OF SEGMENTS PER PIPE

PIPE OD	NUMBER OF SEGMENTS
40	15
50	17
65	21
80	24
100	29
125	33
150	40

PROMAT PROMASEAL® EXPANSION JOINT STRIPS

Used for sealing movement joints between compartment walls & floors.

CODE	SIZE T(MM) X D(MM)	£ PRICE (per strip)
37021	12 x 12	POA
37021	29 x 12	POA
37021	32 x 20	POA
37021	53 x 20	POA
37021	61 x 35	POA
37021	90 x 50	POA
37021	126 x 100	POA
37021	147 x 125	POA
37021	170 x 100	POA

All strips are 1000mm long



AIM FIRE STOP STRIPS

High density mineral wool fire and smoke stop for medium size linear gaps in buildings.

CODE	LENGTH (mm)	VOIDS (mm)	£ PRICE
19760	1200	10 - 100	POA

AIM FIRE STOP BLOCKS

High density mineral wool fire stop blocks for apertures in buildings, especially the flutes of metal profiles.

CODE	£ PRICE
19761	POA

AIM WALL CAVITY FIRE BARRIER

Foil faced mineral wool fire and smoke barrier for all cavity walls and curtain walls, horizontal and vertical use.

CODE	LENGTH (mm)	CAVITY WIDTHS (mm)	£ PRICE
19764	1000	15 - 600	POA

Available cut to size or in slabs

AIM RAISED ACCESS FLOOR FIRE BARRIER

Foil faced mineral wool fire and smoke barrier for the cavities beneath raised access floors.

CODE	VOIDS (mm)	£ PRICE
19768	15 - 1000	POA

Available cut to size or in slabs

AIM PARTITION HEAD BARRIER

Foil faced mineral wool fire and smoke stop for gaps above partitions and masonry walls.

CODE	LENGTH (mm)	VOIDS (mm)	£ PRICE
19767	1000 (1200mm for 50mm)	100 - 600	POA

AIM PARTY WALL FIRE CLOSER

Semi rigid mineral wool to polyethylene dpc cavity closers for the junctions at party walls.

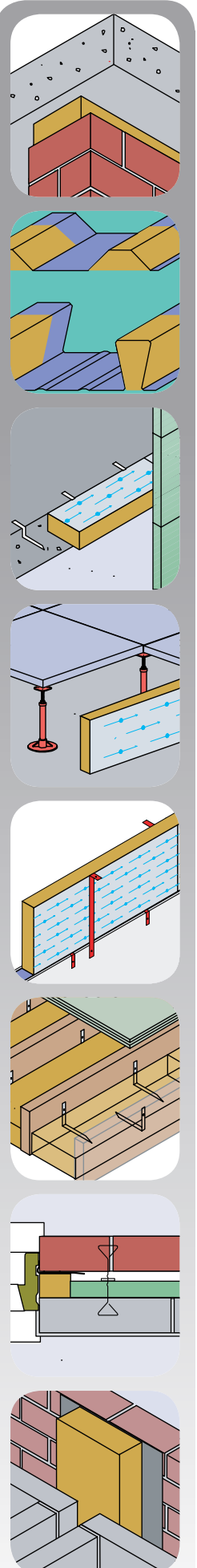
CODE	LENGTH (mm)	THICKNESS (mm)	WIDTH (mm)	SIDE OVERLAP (mm)	BOTTOM OVERLAP (mm)	£ PRICE
Mineral Wool Insulation						
76727	1200	50	300			POA
76727		65				POA
76727		75				POA
76727		85				POA
76727		90				POA
76727		100				POA
DPC - Polyethylene						
76727	1300			40	100	POA

Non standard sizes and DPC offsets are available

AIM VENTILATED FIRE BARRIER

Prevents fire spread in the cavity behind rainscreen & cladding systems. Bespoke cavity sizes available on request.

CODE	SIZES	£ PRICE
19755	Bespoke cavity sizes available on request	POA



BRITISH GYPSUM SPECIALIST BOARDS

GLASROC F MULTIBOARD

CODE	THICKNESS (mm)	LENGTH (mm)	WIDTH (mm)	WEIGHT (per pallet tonnes)	BOARDS (per pallet)	£ PRICE (per board)	£ PRICE (per m ²)
39515 0961	6	2400	1200	0.69	40	44.81	15.56
39515 0983	6	3000	1200	0.86	40	56.02	15.56
39515 1104	10	2400	1200	1.14	40	86.23	29.94
39515 112X	10	3000	1200	1.43	40	107.78	29.94
39515 1206	12.5	2400	1200	1.12	32	113.24	39.32
39515 128X	12.5	3000	1200	1.41	32	141.55	39.32

GLASROC F FIRECASE

CODE	THICKNESS (mm)	LENGTH (mm)	WIDTH (mm)	WEIGHT (per pallet tonnes)	BOARDS (per pallet)	£ PRICE (per board)	£ PRICE (per m ²)
39514 0155	15	2400	1200	1.25	32	61.52	21.36
39514 1200	20	2000	1200	1.82	40	60.79	25.33
39514 2255	25	2000	1200	1.69	30	75.43	31.43
39514 2300	30	2000	1200	1.34	20	85.22	35.51

GLASROC F SOFFITLINE

CODE	THICKNESS (mm)	LENGTH (mm)	WIDTH (mm)	WEIGHT (per pallet tonnes)	BOARDS (per pallet)	£ PRICE (per board)	£ PRICE (per m ²)
39517 6264	26	2400	1200	0.76	30	56.28	19.54
39517 6364	36	2400	1200	0.52	20	67.39	23.40
39517 6464	46	2400	1200	0.48	18	76.06	26.41
39517 6456	56	2400	1200	0.44	14	92.51	32.12
39517 6466	66	2400	1200	0.4	12	106.82	37.09
39517 6476	76	2400	1200	0.34	10	120.76	41.93
39517 6486	86	2400	1200	0.36	10	151.63	52.65

FLAMELYNER COMPONENTS

CODE	COMPONENT PART	LENGTH (mm)	DESCRIPTION	PACK QUANTITY	WEIGHT (per pack kg)	£ PRICE (per pack)
39513 0010	GT1	3600	Main T	20	33	POA
39513 0020	GT2	603	Cross T	40	12	POA
39513 0030	GT3	-	Spring Wedge	1000	5	POA
39513 0040	GT4A	300	Bracing Strap	50	8	POA
39513 0050	GT4B	450	Bracing Strap	50	12	POA
39513 0060	GT5	3000	24mm x 24mm Angle	30	18	POA

GLASROC F FLAMELINE

CODE	THICKNESS (mm)	LENGTH (mm)	WIDTH (mm)	BOARDS (per pallet)	M ² (per pallet)	£ PRICE (per board)	£ PRICE (per m ²)
39513 1064	6	2400	600	40	57.6	20.23	14.05
39513 1104	10	2400	600	40	57.6	38.92	27.03

GLASROC F FIRECASE SCREWS

CODE	LENGTH (mm)	BOX QUANTITY	S'DRIVER BITS INC.	WEIGHT (per box kg)	£ PRICE (per box)
39514 9400	40	1000	2	2.4	27.82
39514 9500	50	1000	2	3.2	34.90
39514 9588	58	1000	2	3.8	39.91
39514 9590	70	500	1	2.3	23.07

Used to fix Glasroc F Firecase





FIRECASE

frameless encasement system

FireCase frameless encasement system provides a high quality cladding to structural steel columns and beams, offering up to 120 minutes fire protection. The Glasroc F **FIRECASE** lining board provides a smooth, robust surface and there is no requirement to joint or apply a decorative treatment.

120 minutes fire protection to structural steelwork

Non-combustible system

Simple and quick to install

- No costly steel preparation required
- Option of staple fixing for faster installation
- Minimal impact to other trades on site
- Covered by SpecSure® lifetime system warranty
- Covered by the Plasterboard Recycling Service



ROCKWOOL FIREPRO

ROCKWOOL HIGH IMPACT SOFFIT LINER

CODE	THICKNESS (mm)	LENGTH (mm)	WIDTH (mm)	£ PRICE (per m ²)
16114 0137	136	1200	600	26.65
16114 0166	166	1200	600	35.65

LINEAR FIRESTOP 2

CODE	THICKNESS (mm)	LENGTH (mm)	WIDTH (mm)	LINEAR METRE (per carton)	£ PRICE (per lm)
16024 7406	12.5	1000	100	144	2.11
16024 7405	20	1000	100	90	3.25
16024 7636	30	1000	100	60	4.88
16024 7505	40	1000	100	42	5.69
16024 7507	50	1000	100	36	6.43
16024 7508	60	1000	100	30	7.24
16024 7509	70	1000	100	24	8.00
16024 7510	80	1000	100	18	8.73
16024 7511	90	1000	100	18	9.50
16024 7660	100	1000	100	18	10.26
16024 7516	12.5	1000	150	96	3.57
16024 7517	20	1000	150	60	5.69
16024 7550	30	1000	150	40	7.40
16024 751X	40	1000	150	28	8.53
16024 7524	50	1000	150	24	9.61
16024 7532	70	1000	150	16	11.93
16024 7533	80	1000	150	12	13.04
16024 7535	100	1000	150	12	15.34
16024 7536	12.5	1000	200	72	4.71
16024 7537	20	1000	200	45	7.59
16024 7302	30	1000	200	30	9.89
16024 7540	50	1000	200	18	12.92
16024 7547	90	1000	200	9	18.99
16024 7310	100	1000	200	9	20.52

For Trapezoidal Firestop 3B - Prices are available with information on deck type and profile size



ROCKWOOL®

You can count on it...



**...Rockwool takes care of buildings
in three important ways**

All Rockwool products cleverly combine excellent thermal insulation, acoustic performance and non-combustibility. We offer a wide range of products and systems for all applications, including roofs, floors, cavity and external walls, in both public and domestic buildings. What's more, Rockwool products come from a renewable source and are recyclable too.

rockwool.co.uk

ROCKWOOL FIREPRO

FIRE BARRIER

CODE	THICKNESS (mm)	LENGTH (mm)	WIDTH (mm)	ROLLS (per pack)	AREA (per pack m ²)	£ PRICE (per m ²)
16066 0504	50	4000	1000	1	4	25.47
16066 0550	60	3500	1000	1	3.5	32.24

Extra charge for foil facing to one side: £1.52/m² net must be added. Extra charge for wire on both sides: £1.79/m² net must be added.
1/2 Hour = one 50mm layer, 1 Hour = two 50mm layers, 2 Hours = two 60mm layers, foil faced

SP FIRESTOP SLABS

CODE	TYPE	THICKNESS (mm)	LENGTH (mm)	WIDTH (mm)	PIECES (per carton)	AREA (per pack m ²)	£ PRICE (per m ²)
16097 0602	SP60	75	1000	650	4	2.34	154.48
16097 1202	SP120	90	1000	650	4	2.34	185.56

SP FIRESTOP FIXING BRACKETS

CODE	TYPE	THICKNESS (mm)	PIECES (per box)	£ PRICE (per box)
16097 9001	SP/S	75	50	92.06
16097 9002	SP/L	90	50	107.35

SPIRAL SCREWS

CODE	LENGTH (mm)	£ PRICE (per 1000)
41988 0040	40	23.80
41988 0050	50	18.36
41988 0065	65	29.27
41988 0075	75	32.12
41988 0090	90	36.18
41988 0100	100	41.18
41988 0110	110	49.97
41988 0140	140	60.70
41988 0165	165	70.20
41988 0180	180	73.79

BEAMCLAD CLIPS

CODE	SIZE	£ PRICE (per box)
16024 0100	1000/Box	194.88

BEAMCLAD WASHERS

CODE	SIZE	£ PRICE (per box)
16024 0101	2000/Box	77.81

FIREPRO GLUE

CODE	SIZE	£ PRICE (per tub)
16024 0177	17kg Tub	126.62

BEAMCLAD

CODE	THICKNESS (mm)	LENGTH (mm)	WIDTH (mm)	PIECES (per pallet)	M ² (per pallet)	£ PRICE (per m ²)
16022 0250	25	2000	1200	45	108	15.72
16022 0300	30	2000	1200	40	96	23.34
16022 0350	35	2000	1200	32	76.8	28.61
16022 0400	40	2000	1200	30	72	31.14
16022 0500	50	2000	1200	24	57.6	38.94
16022 0600	60	2000	1200	20	48	48.97

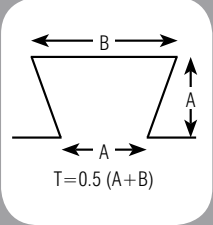
Extra charge for Beamclad Aluminium Faced: £1.52/m² net must be added to the plain Beamclad price. Extra charge for Beamclad Tissue Faced: £0.71/m² net must be added to the plain Beamclad price.

FIRESTOP COMPOUND

CODE	SIZE	£ PRICE (per bag)
39305 0010	20kg bag	POA

2 HOUR FIRESTOP PIPE COLLARS

CODE	SIZE (mm)	£ PRICE EACH
39308 0055	55	POA
39308 0063	63	POA
39308 0082	82	POA
39308 0110	110	POA
39308 0125	125	POA
39308 0160	160	POA



4 HOUR FIRESTOP PIPE COLLARS

CODE	SIZE (mm)	£ PRICE EACH
39309 0055	55	POA
39309 0063	63	POA
39309 0082	82	POA
39309 0110	110	POA
39309 0125	125	POA
39309 0160	160	POA

ABLATIVE LIQUID

CODE	SIZE	£ PRICE (per tub)
16193 0030	5L Tub	29.80

2 HOUR AND 4 HOUR ABLATIVE BATTS

CODE	SIZE (mm)	£ PRICE EACH
39302 0620	60 x 600 x 1200	15.97

2 HOUR INTUMESCENT PIPE WRAPS

CODE	SIZE (mm)	£ PRICE EACH
39306 0055	55	POA
39306 0063	63	POA
39306 0082	82	POA
39306 0110	110	POA
39306 0125	125	POA
39306 0160	160	POA

4 HOUR INTUMESCENT PIPE WRAPS

CODE	SIZE (mm)	£ PRICE EACH
39307 0055	55	POA
39307 0063	63	POA
39307 0082	82	POA
39307 0110	110	POA
39307 0125	125	POA
39307 0160	160	POA

INSULATED FIRE SLEEVES

CODE	PIPE OD (mm)	THICKNESS (mm)	LENGTH (mm)	PIECES (per pallet)	£ PRICE (per length)
39301 0542	54	25	300	4	POA
39301 0602	60	25	300	4	POA
39301 0802	80	25	300	4	POA
39301 1082	108	25	300	8	POA
39301 1272	127	25	300	6	POA
39301 1592	159	25	300	6	POA

INTUMESCENT PILLOW

CODE	SIZE (mm)	£ PRICE (per pillow)
39300 0350	300 x 100 x 35	POA
39300 0351	300 x 150 x 35	POA
39300 0352	300 x 200 x 35	POA

ACOUSTIC INTUMESCENT SEALANT

CODE	SIZE (ml)	£ PRICE (per cartridge)
16193 0020	310ml cartridge	POA

SPEEDLINE

SPEEDLINE SOFFIT LINER

CODE	THICKNESS (mm)	LENGTH (mm)	WIDTH (mm)	£ PRICE
39633 1360	136	1200	600	POA
39633 1660	166	1200	600	POA
39633 0186	86	1200	2400	POA
39633 0156	56	2400	1200	POA
39633 0166	66	2400	1200	POA
39633 0176	76	2400	1200	POA
39633 0196	96	2400	1200	POA
39633 1106	106	2400	1200	POA
39633 1116	116	2400	1200	POA

SPEEDLINE ACCESS PANELS

CODE	DESCRIPTION	SIZE (mm)	£ PRICE (each)
Access Panels are available for both walls and ceilings with metal or plasterboard doors, beaded or picture frame, non-fire rated or 4 hour fire rated. Panels are also available with up to a 46dB rating			
Standard Panels - Ceiling Access			
73811 0664	Metal Door with Picture Frame (EX/MT/PF)	300 x 300	97.33
73811 0728		450 x 450	111.04
73811 0899		600 x 600	123.59
73811 0702	Plasterboard Door with Beaded Frame (EX/PB/SB)	300 x 300	113.30
73811 0722		450 x 450	131.56
73811 0706		600 x 600	142.75
Standard Panels - Wall Access			
73811 0920	Metal Door with Picture Frame (EX/WD/PF)	300 x 300	97.45
73811 0596		450 x 450	115.68
73811 0718		600 x 600	124.63
Standard Panels - Ceiling or Wall Access with budget lock			
73811 0070	Fire Rated with Picture or Beaded Frame (EX/XL/FD)	300 x 300	145.64
73811 0071		450 x 450	166.21
73811 0072		600 x 600	180.40
Loft Panels			
73811 9073	Fire Rated (EX/LOFT/PF/FD) with Picture Frame	530 x 740	102.66
73811 9075		555 x 655	99.18
73811 4250	Fire Rated with Picture Frame & 3 way lock (LH/PF/FD/3W)	740 x 530	84.70
73811 4252		555 x 655	84.70

SPEEDLINE ACOUSTIC FIRECAPS

CODE	DESCRIPTION	MANUFACTURER REFERENCE	£ PRICE EACH
39609 0050	For cut out 50-75mm	AFF 109/150	14.99
39609 0075	For cut out 75-100mm	AFF 109/200	15.99
39609 0100	For cut out 100-140mm	AFF 109/250	20.35
39609 0140	For cut out 140-250mm	AFF 109/300	32.30
39609 0144	For cut out 140 - 270mm	AFF 109/350	34.99



EUROFORM VERSA BUILDING BOARDS

21

VERSAPANEL® - CLASS 0 CEMENT BONDED PARTICLE BOARD

For internal & external applications to floors, walls or ceilings. Rot, fire, impact and moisture resistant. Three types of finishes available: unsanded, sanded and calibrated. Prices shown are for unsanded finish

CODE	THICKNESS (mm)	LENGTH (mm)	WIDTH (mm)	APPROX WEIGHT (kg per m ²)	NO. (per pallet)	£ PRICE (per board)	£ PRICE (per m ²)
39518 0053	6	2400	1200	7.5	85	44.99	15.62
39518 0087	8	2400	1200	10	57	39.36	13.67
39518 0104	10	2400	1200	12.5	55	49.10	17.05
39518 0105	10	3050	1220	12.5	50	65.30	17.55
39518 0121	12	2400	1200	15.4	46	58.99	20.48
39518 0560	12	3050	1220	15.4	37	78.14	21.00
39518 0158	16	2400	1200	20	37	76.06	26.41
39518 0186	18	2400	1200	22.5	28	106.01	36.81

Range of other sizes available on request.

VERSAFIRE® - A1-NON-COMBUSTIBLE BUILDING BOARD

A1 - non combustible board in accordance with BS EN 1716: 2002 and 1182: 2002. For internal & external applications to floors, walls or ceilings. Up to 240mins fire resistance. Rot, impact and moisture resistant.

CODE	THICKNESS (mm)	LENGTH (mm)	WIDTH (mm)	APPROX WEIGHT (kg per m ²)	NO. (per pallet)	£ PRICE (per board)	£ PRICE (per m ²)
39614 0065	6	2400	1200	6.6	85	68.83	23.90
39614 0100	9	2400	1200	9.9	65	103.22	35.84
39614 0127	12	2400	1200	13.2	55	137.66	47.80

VERSALINER™ JPM - CLASS 0 GYPSUM FIBREBOARD

High performance class 0 Gypsum Fibreboard for internal use as a dry lining board to tile-backer panel. For applications requiring good acoustic performance, rot/fire/moisture resistance or seamless finish.

CODE	THICKNESS (mm)	LENGTH (mm)	WIDTH (mm)	APPROX WEIGHT (kg per m ²)	NO. (per pallet)	£ PRICE (per board)	£ PRICE (per m ²)
39626 0060	6	2400	1200	6.9	85	36.95	12.83
39626 0010	10	2400	1200	11.5	53	61.69	21.42
39626 0125	12.5	2400	1200	14.4	42	74.02	25.70

VERSA WEATHER PRO-L™ - CLASS 0 CALCIUM SILICATE BOARD

For internal or external applications, Versa Weather Pro-L can be used for a wide range of applications because of its easy working, fixing and decorating characteristics.

CODE	THICKNESS (mm)	LENGTH (mm)	WIDTH (mm)	APPROX WEIGHT (kg per m ²)	NO. (per pallet)	£ PRICE (per board)	£ PRICE (per m ²)
39608 0068	6	2400	1200	7.8	100	52.27	18.15
39608 0089	9	2400	1200	11.7	75	79.92	27.75
39608 0125	12	2400	1200	15.6	50	106.56	37.00

VERSA SOBEN FP-900™ - A1-NON-COMBUSTIBLE CALCIUM SILICATE BOARD

For internal or external applications, Versa Soben FP-900 is a high performance board for applications requiring high fire resistance, impact, rot, damp and humidity.

CODE	THICKNESS (mm)	LENGTH (mm)	WIDTH (mm)	APPROX WEIGHT (kg per m ²)	NO. (per pallet)	£ PRICE (per board)	£ PRICE (per m ²)
62117 9090	9	2400	1200	8.1	75	103.82	26.05

RENDABOARD™ - CLASS 0 BUILDING BOARD

For internal or external applications, rendaboard has been developed as a direct render board (subject to applicators approval). Rendaboard is resistant to fire, impact, rot, moisture and has good acoustic performance.

CODE	THICKNESS (mm)	LENGTH (mm)	WIDTH (mm)	APPROX WEIGHT (kg per m ²)	NO. (per pallet)	£ PRICE (per board)	£ PRICE (per m ²)
39628 0090	9	2400	1200	9.9	65	43.15	14.98
39628 0120	12	2400	1200	13.2	55	56.96	19.78

VERSATECBOR A

CODE	THICKNESS (mm)	LENGTH (mm)	WIDTH (mm)	£ PRICE (per board)
39641 0100	10	2400	1200	60.60
39641 0120	12	2400	1200	72.72

VERSATECBOR B

CODE	THICKNESS (mm)	LENGTH (mm)	WIDTH (mm)	£ PRICE (per board)
39641 1150	15	2400	1200	90.89
39641 1200	20	2400	1200	121.22



FIREHALT

FIREHALT FIRE CURTAIN & ACCESSORIES

CODE	DESCRIPTION	SIZE (m)	ROLL SIZE (m ²)	UNIT	£ PRICE (per m ²)
39594 2000	Firehalt SF (white & green) 120 minutes smoke & flame barrier	25.0 x 1.2	30	1 roll	17.57
	Firehalt SF (white only)	25.0 x 2.05	51.25	1 roll	17.57
39594 1000	Firehalt Gold 120 minutes integrity 38 minutes insulation Cavity Fire Barrier	7.0 x 1.2	8.4	1 roll	35.54
39594 1010	Firehalt 60/30 60 minutes integrity 30 minutes insulation Cavity Fire Barrier	7.0 x 1.2	8.4	1 roll	21.00
39594 2000	Firehalt SF 120 minutes integrity	25.0 x 1.2	30	1 roll	17.57

FIREHALT CURTAIN FIXINGS

CODE	DESCRIPTION	SIZE (mm)	LENGTH (m)	UNIT	£ PRICE (per m ²)
	Galvanised angle	25 x 25 x 0.5	3.6	1	5.38
	Galvanised stud	50 x 35 x 0.5	2.4	1	5.85
39594 4338	Self drilling screw	38 x 4		1000 per box	39.23
39594 4120	Staple gun	Suitable for 10mm staples		1	72.04
39594 4121	Galvanised staples	10		5000 per box	13.23

PENETRATION ACCESSORIES

CODE	DESCRIPTION (closed)	WIDTH (mm)	LENGTH (mm)	UNIT	£ PRICE (per single)	£ PRICE (per 5 lengths)	£ PRICE (per 10 lengths)
39594 4010	SF Spider	35	1250	1	41.29	37.53	35.66
39594 4020	Gold Spider	65	1250	1	53.09	48.30	45.87
39594 4030	Stainless steel banding (Reel)	10 x 30m	On plastic wind out reel		63.70		
39594 4040	Lock			50 per box	66.91		
39594 2030	Brush Seal			1	42.00		

FIREHALT GAP SEAL TAPE

CODE	DESCRIPTION	THICKNESS (mm)	WIDTH (mm)	LENGTH (mm)	UNIT	£ PRICE (per roll)
39594 4050	Gap seal tape 265	8	140	5	1	38.53
39594 4055	Gap seal tape 265	8	140	10	1	73.22
39594 4060	Gap seal tape 465	14	140	5	1	46.50
39594 4065	Gap seal tape 465	14	140	10	1	88.33

3M™ SCOTCHKOTE™ LIQUID COATINGS

23

Thin Film Intumescent Coating Range

The 3M Scotchkote SPX 700 series of waterborne single pack intumescent coatings offers 30, 60, 90 and 120 minute fire protection periods for structural steelwork. Testing has been carried out to ASFP cellular beam protocol, producing 3M Scotchkote SPX 700 series RT1213. 3M is proud to be an industry leader in fire solutions worldwide.

Formerly taken to market as Copon from E Wood Ltd, following the acquisition by 3M, the products are being integrated into the Scotchkote range from 3M. The track record of these products, combined with the brand of 3M within the construction industry means that specifiers and users can trust the technology they are using to provide the solutions they need.

The products can be applied by brush, roller or airless spray.

3M™ Scotchkote™ SPX 700 series are highly specialised fire protection materials and as such we recommend that products be installed by 3rd party accredited installers. All materials are 3rd party Certifire accredited.

3M INTUMESCENT PAINT		
CODE	PRODUCT DESCRIPTION	£ PRICE (per drum)
39634 0710	SPX 710 Waterbourne Intumescent Paint	142.00
39634 0720	SPX 720 Waterbourne Intumescent Paint	162.00
39634 0730	SPX 730 Waterbourne Intumescent Paint	162.00
39634 1005	LS1000 Intumescent Emulsion for Wood, Fibre and Related Composite Structures. 5 Litres White.	48.00
39634 1020	LS1000 Intumescent Emulsion for Wood, Fibre and Related Composite Structures. 20 Litres White.	186.00
39634 3000	LS3000 Intumescent Coating 0 High Solids Epoxy System for Steel, Wood, Aluminium & Concrete. 5 Litres White	96.00
39634 4000	LS4000 Intumescent Coating - Clear System Providing Protection to Timber Surfaces. 4.5 Litres Clear	97.20
39634 4001	LS4000 CL Intumescent Sealer - Low Colour Moisture Resistant Sealant for LS4000. 5 Litres Clear Mat/Satin/Gloss	61.25



Loading tables are available from the 3M Northallerton Technical Information Centre – 01609 780170.

Data provided in the loading tables is based on the requirements of BS5950 Code of Practice for Fire Resistance Design for structural steelwork. This code of practice designates a limiting temperature of 620°C for horizontal beams exposed on three sides and supporting a concrete slab, and a limiting temperature of 550°C for horizontal beams with four sides exposed and all vertical members. Data for other limiting temperatures is available on request.

KNAUF INSULATION

ROCKSILK FIRETECH SLAB - PLAIN

CODE	THICKNESS (mm)	LENGTH (mm)	WIDTH (mm)	£ PRICE (per board)	£ PRICE (per m ²)
12020 0200	20	1800	1200	21.87	10.12
12020 0251	25	1800	1200	27.37	12.67
12020 0301	30	1800	1200	33.80	15.19
12020 0351	35	1800	1200	38.24	17.70
12020 0401	40	1800	1200	43.69	20.23

Extra charge for foil or scrim facing £1.35/m² nett.
Other thicknesses of Firetech 160 are available, contact your local branch for details.

ROCKSILK FIRETECH ACCESSORIES

CODE	DESCRIPTION	LENGTH (per 1000)	QUANTITY (per tub)	£ PRICE (per tub)	£ PRICE (per item)
12020 9105	Firetech Screws	50	1000	47.21	-
12020 9106	Firetech Screws	65	1000	52.85	-
12020 9107	Firetech Screws	75	1000	60.42	-
12020 9109	Firetech Screws	90	1000	71.75	-
12020 9110	Firetech Screws	110	1000	83.08	-
	Firetech Adhesive (10L)	-	-	-	39.71

KNAUF FIREBOARD

CODE	THICKNESS (mm)	LENGTH (mm)	WIDTH (mm)	£ PRICE (per board)	£ PRICE (per m ²)
73729 0155	15	2400	1200	63.01	21.88
73729 0195	20	1800	1200	63.98	29.62
73729 0255	25	1800	1200	67.78	31.38
73729 0305	30	1800	1200	78.54	36.36

KNAUF FIREBOARD ACCESSORIES

CODE	DESCRIPTION	SIZE (mm)	PACK QUANTITY	£ PRICE (per pack)	£ PRICE (per tub)
	UniFlott Finisher	25kg Bag	-	-	POA
73729 9250	Fireboard Gripper Screws	50	1,000	55.14	-
73929 9254	Fireboard Gripper Screws	60	1,000	65.93	-

ROCKSILK SMOKE AND FIRE BARRIER

CODE	THICKNESS (mm)	LEGS (mm)	WIDTH (mm)	AREA (per roll m ²)	£ PRICE (per m ²)
12211 0500	50	4	900	3.6	68.01
12211 0503	50	4	2 x 300	2.4	68.01
	50	4	2 x 400	3.2	POA

Foil faced one side and two sides is available – check branch for details.

ROCKSILK FIRETECH DRY FIX NOGGIN SLAB

CODE	THICKNESS (mm)	LENGTH (mm)	WIDTH (mm)	SLAB (per pallet)	AREA (per pallet m ²)	£ PRICE (per board)	£ PRICE (per m ²)
12020 8030	30	1800	1200	36	77.76	54.04	25.02
12020 8040	40	1800	1200	28	60.48	72.04	33.35
12020 8050	50	1800	1200	22	47.52	89.08	41.24
12020 8060	60	1800	1200	18	38.88	105.86	49.01

ROCKSILK PYRODUCT SLAB

CODE	THICKNESS (mm)	LENGTH (mm)	WIDTH (mm)	SLAB (per pallet)	AREA (per pallet m ²)	PACK (per pallet)	£ PRICE (per board)	£ PRICE (per m ²)
12201 0451	45	1200	600	4	2.88	12	88.78	123.31
12201 0900	90	1200	600	2	1.44	12	90.55	125.77



Don't Panic

Knauf Insulation's range of certified products offer up to 4 hours fire protection.

Knauf Insulation offers a range of certified fire protection systems for structural steel beam and column encasement in either concealed or exposed applications. Our range of RocksilK FireTech Slabs and Knauf Fireboard offer the following features:

RocksilK FireTech Slab

- Up to 4 hours fire protection
- Lightweight for ease and speed of fixing, especially on beams
- Moisture tolerant
- Non-combustable to Euroclass A1 and Building Regulations Class O

Knauf Fireboard

- High performance encasement
- Up to 2 hours fire protection
- Class O to the Building Regulations
- Robust impact resistant solution
- Ease and speed of installation
- Lower dust level than other rigid board systems
- Can be cut, or simply scored and snapped



Knauf Fireboard



RocksilK FireTech Slab

For more information call us now on 08700 668 660 quoting ref: RA75908

or visit www.knaufinsulation.co.uk

it's time to save energy

KNAUFINSULATION

TENMAT FIRE STOPPING

PIPE FIRE SLEEVES

For fire & acoustic protection of metal & plastic pipes which pass through walls & floors.

CODE	PRODUCT DESCRIPTION	£ PRICE (per item)
37030 0015	Pipe Fire Sleeve to suit 15mm Pipe (300mm Long)	12.66
37030 0022	Pipe Fire Sleeve to suit 22mm Pipe (300mm Long)	13.10
37030 0028	Pipe Fire Sleeve to suit 28mm Pipe (300mm Long)	14.06
37030 0035	Pipe Fire Sleeve to suit 35mm Pipe (300mm Long)	14.14
37030 0042	Pipe Fire Sleeve to suit 42mm Pipe (300mm Long)	15.52
37030 0048	Pipe Fire Sleeve to suit 48mm Pipe (300mm Long)	16.02
37030 0054	Pipe Fire Sleeve to suit 54mm Pipe (300mm Long)	16.50
37030 0060	Pipe Fire Sleeve to suit 60mm Pipe (300mm Long)	16.80
37030 0067	Pipe Fire Sleeve to suit 67mm Pipe (300mm Long)	16.98
37030 0076	Pipe Fire Sleeve to suit 76mm Pipe (300mm Long)	18.04
37030 0080	Pipe Fire Sleeve to suit 80mm Pipe (300mm Long)	18.20
37030 0089	Pipe Fire Sleeve to suit 89mm Pipe (300mm Long)	20.14
37030 0102	Pipe Fire Sleeve to suit 102mm Pipe (300mm Long)	21.72
37030 0108	Pipe Fire Sleeve to suit 108mm Pipe (300mm Long)	21.84
37030 0110	Pipe Fire Sleeve to suit 110mm Pipe (300mm Long)	23.04
37030 0125	Pipe Fire Sleeve to suit 125mm Pipe (300mm Long)	24.88
37030 0133	Pipe Fire Sleeve to suit 133mm Pipe (300mm Long)	25.54
37030 0140	Pipe Fire Sleeve to suit 140mm Pipe (300mm Long)	26.08
37030 0160	Pipe Fire Sleeve to suit 160mm Pipe (300mm Long)	27.92
37030 0169	Pipe Fire Sleeve to suit 169mm Pipe (300mm Long)	29.12

150mm and 200mm also available

FIRE & ACOUSTIC CABLE BASKET SLEEVES

For fire & acoustic protection of cable trays and baskets which pass through walls & floors.

CODE	PRODUCT DESCRIPTION	£ PRICE (per item)
37024 0050	Fire & Acoustic Cable Basket Sleeve 50 x 54/30mm	12.44
37024 0075	Fire & Acoustic Cable Basket Sleeve 75 x 54/30mm	14.74
37024 0100	Fire & Acoustic Cable Basket Sleeve 100 x 54/30mm	17.76
37024 0150	Fire & Acoustic Cable Basket Sleeve 150 x 54/30mm	23.08
37024 0200	Fire & Acoustic Cable Basket Sleeve 200 x 54/30mm	31.68
37024 0300	Fire & Acoustic Cable Basket Sleeve 300 x 54/30mm	41.38
37024 0450	Fire & Acoustic Cable Basket Sleeve 450 x 54/30mm	58.96
37024 5000	Fire & Acoustic Cable Basket Infill Material	17.76

SWITCH BOX COVERS & INSERTS

Fire & acoustic rated protection of socket, switch & drylining boxes in walls.

CODE	PRODUCT DESCRIPTION	£ PRICE (per item)
37025 0010	Single Switch Box Cover	2.16
37025 0012	Double Switch Box Cover	3.33
37025 0035	Single Switch Box Insert - 35mm Deep Boxes	1.50
37025 0037	Double Switch Box Insert - 35mm Deep Boxes	2.25
37025 0100	Single Switch Box Insert - 47mm Deep Boxes	1.95
37025 0200	Double Switch Box Insert - 47mm Deep Boxes	3.00



VENT DUCT FIRE SLEEVES

Prevents the passage of fire through PVC vent ducting in fire rated partitions.

CODE	PRODUCT DESCRIPTION	£ PRICE (per item)
37026 0110	Vent Duct Fire Sleeve to suit 110 x 54mm	11.92
37026 0150	Vent Duct Fire Sleeve to suit 150 x 70mm	14.52
37026 0204	Vent Duct Fire Sleeve to suit 204 x 60mm	16.90
37026 0215	Vent Duct Fire Sleeve to suit 215 x 25mm	15.60
37026 0220	Vent Duct Fire Sleeve to suit 220 x 55mm	17.48
37026 0225	Vent Duct Fire Sleeve to suit 225 x 25mm	16.14
37026 0234	Vent Duct Fire Sleeve to suit 234 x 29mm	16.82
37026 0300	Vent Duct Fire Sleeve to suit 300 x 25mm	20.16
37026 0308	Vent Duct Fire Sleeve to suit 308 x 29mm	20.80

VENT DUCT WRAPS

Prevents the passage of fire through PVC vent ducting in fire rated blockwork walls.

CODE	PRODUCT DESCRIPTION	£ PRICE (per item)
37031 0110	Vent Duct Wrap to suit 110 x 54mm Vent Duct	4.16
37031 0150	Vent Duct Wrap to suit 150 x 70mm Vent Duct	6.94
37031 0180	Vent Duct Wrap to suit 180 x 90mm Vent Duct	8.54
37031 0204	Vent Duct Wrap to suit 204 x 60mm Vent Duct	8.36
37031 0215	Vent Duct Wrap to suit 215 x 25mm Vent Duct	6.08
37031 0220	Vent Duct Wrap to suit 220 x 55mm Vent Duct	8.72
37031 0225	Vent Duct Wrap to suit 225 x 25mm Vent Duct	6.70
37031 0300	Vent Duct Wrap to suit 300 x 25mm Vent Duct	8.24

CEILING FAN FIRE SLEEVES

Maintains the fire resistance of 30 & 60 minute ceilings when fitted with recessed fans & vents.

CODE	PRODUCT DESCRIPTION	£ PRICE (per item)
37028 0080	Ceiling Fan Fire Sleeve to suit 80mm Diameter	6.20
37028 0100	Ceiling Fan Fire Sleeve to suit 100mm Diameter	7.42

VENTILATED FIRE BARRIERS

Prevents fire spread in the cavity behind rainscreen & cladding systems.

CODE	PRODUCT DESCRIPTION	£ PRICE (per item)
37029 0025	FF102/25 Ventilated Fire Barrier for 25mm cavities	6.62
37029 0050	FF102/50 Ventilated Fire Barrier for 50mm cavities	19.72
37029 1250	FF109/125 Ventilated Fire Barrier for 125mm cavities	36.80

Other cavity sizes also available on request.

LIGHT COVERS & FIRE HOODS

For fire, acoustic & thermal protection of recessed lights.

CODE	PRODUCT DESCRIPTION	£ PRICE (per item)
37032 0150	Downlighter Cover - 150 x 150mm	8.56
37032 0200	Downlighter Cover - 200 x 200mm	14.56
37032 0250	Downlighter Cover - 250 x 250mm	18.62
37032 0300	Downlighter Cover - 300 x 170mm	28.92
37032 0350	Downlighter Cover - 350 x 230mm	31.56
37032 5000	Loft Cover	8.80
37032 1060	Luminaire Cover 600 x 600mm	28.92
37032 1200	Luminaire Cover 1200 x 600mm	42.08



FIRESTEM FIRE STOP PENETRATING SEALS

FIRESTEM INTUMESCENT MASTIC

High performance water based acrylic mastic suitable for filling gaps up to 35mm and sealing around penetrations and joints in fire protection boards. For internal use only.

CODE	PRODUCT	SIZE	FIRE RATING MAXIMUM	£ PRICE (per item)
39588 0010	Intumescent mastic	310ml Cartridge	4 hour	2.01

FIRESTEM FIRE BARRIERS

High density mineral wool fibre batts coated both sides with a flexible ablative coating to provide smoke and fire barriers in compartment walls and floors.

CODE	PRODUCT	SIZE (mm)	FIRE RATING MAXIMUM	£ PRICE (per item)
39585 0050	Double sided fire barrier	1200 x 600 x 50	4 hour	22.93

FIRESTEM ABLATIVE COATINGS

For use with coated fire barriers.

CODE	SIZE	£ PRICE (per item)
39587 0050	5kg Tub	26.49

FIRESTEM FIRE CEMENT

Firestop mortar powder, when mixed with water, produces a trowel or pouring grade mortar for load, or non load bearing fire barrier seals through openings in floors and walls.

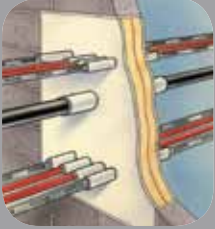
CODE	SIZE	FIRE RATING MAXIMUM	£ PRICE (per item)
39586 0020	25kg	4 hour	26.49

FIRESTEM PIPE COLLARS

For use around synthetic pipes penetrating a compartment wall or floor.

In a fire situation the intumescent material expands to seal off the pipe, thereby preventing the spread of smoke and fire.

CODE	PRODUCT	SIZE (mm)	FIRE RATING MAXIMUM	£ PRICE (per item)
39580 0038	Pipe collar	38	2 hour	11.93
39580 0040	Pipe collar	40	2 hour	11.93
39580 0055	Pipe collar	55	2 hour	11.34
39580 0063	Pipe collar	63	2 hour	12.70
39580 0075	Pipe collar	75	2 hour	14.19
39580 0082	Pipe collar	82	2 hour	14.19
39580 0090	Pipe collar	90	2 hour	15.07
39580 0110	Pipe collar	110	2 hour	11.34
39580 0125	Pipe collar	125	2 hour	17.12
39580 0160	Pipe collar	160	2 hour	28.52
39581 0038	Pipe collar	38	4 hour	12.56
39581 0040	Pipe collar	40	4 hour	12.56
39581 0055	Pipe collar	55	4 hour	11.93
39581 0063	Pipe collar	63	4 hour	13.46
39581 0075	Pipe collar	75	4 hour	15.75
39581 0082	Pipe collar	82	4 hour	15.75
39581 0090	Pipe collar	90	4 hour	15.45
39581 0110	Pipe collar	110	4 hour	12.22
39581 0125	Pipe collar	125	4 hour	19.15
39581 0160	Pipe collar	160	4 hour	29.75



FIRESTEM FIRE STOP PENETRATING SEALS

29

FIRESTEM PIPE WRAPS

CODE	PRODUCT	SIZE (mm)	FIRE RATING MAXIMUM	£ PRICE (per item)
39582 0055	Pipe wrap	55	2 hour	3.20
39582 0063	Pipe wrap	63	2 hour	3.66
39582 0082	Pipe wrap	82	2 hour	5.02
39582 0110	Pipe wrap	110	2 hour	5.57
39582 0125	Pipe wrap	125	2 hour	7.40
39582 0160	Pipe wrap	160	2 hour	15.75
39583 0055	Pipe wrap	55	4 hour	3.32
39583 0063	Pipe wrap	63	4 hour	4.55
39583 0082	Pipe wrap	82	4 hour	6.80
39583 0110	Pipe wrap	110	4 hour	8.02
39583 0160	Pipe wrap	160	4 hour	19.97

FIRESTEM FIRE PILLOWS

For use in temporary or permanent fire barriers around all types of services.

CODE	PRODUCT	SIZE (mm)	FIRE RATING MAXIMUM	£ PRICE (per item)
39584 0100	Fire pillow	300 x 100 x 35	4 hour	5.94
39584 0150	Fire pillow	300 x 150 x 35	4 hour	6.83
39584 0200	Fire pillow	300 x 200 x 35	4 hour	8.06

FIRESTEM EXPANSION JOINTS

A compressible fire resistant foam bonded on both sides to a graphite based intumescent, supplied in 1 metre lengths.

CODE	PRODUCT	SIZE (mm)	FIRE RATING MAXIMUM	£ PRICE (per item)
39589 0020	GF2	8-12	2 hour	2.60
39589 0050	GF5	13-25	2 hour	3.68
39589 0080	GF8	26-50	2 hour	7.77

FIRESTEM DOORSTRIPS

Where a new or existing door needs to be fitted with a smoke and/or fire seal. Standard colours white or brown, other colours available on request.

CODE	PRODUCT	SIZE (mm)	FIRE RATING MAXIMUM	£ PRICE (per item)
39590 0030	GDS 30 FS	10 x 4	30 minutes	2.07
39590 0035	GDS 30 F	10 x 4	30 minutes	1.60
39590 0060	GDS 60 FS	10 x 4	60 minutes	4.53
39590 0065	GDS 60 F	10 x 4	60 minutes	3.87



A/V TABLES

UNIVERSAL BEAMS: A/V FACTORS



SERIAL SIZE (mm)	MASS (kg/m)	DEPTH D (mm)	WIDTH B (mm)	AREA A (cm ²)	2-SIDED (m ³)	3-SIDED (m ³)	4-SIDED (m ³)
914 x 305	289	926.6	307.8	368.80	35	60	65
	253	918.5	305.5	322.80	40	65	75
	224	910.3	304.1	285.20	45	75	85
	201	903.0	303.4	256.40	45	80	95
838 x 292	226	850.9	293.8	288.70	40	70	80
	194	840.7	292.4	247.10	45	80	90
	176	834.9	291.6	224.10	50	90	100
762 x 267	197	769.6	268.0	250.70	40	70	85
	173	762.0	266.7	220.40	45	80	95
	147	753.9	265.3	188.00	55	95	110
686 x 254	170	692.9	255.8	216.50	45	75	90
	152	687.6	254.5	193.80	50	85	95
	140	683.5	253.7	178.60	50	90	105
	125	677.9	253.0	159.60	60	100	115
610 x 305	238	633.0	311.5	303.70	30	50	60
	179	617.5	307.0	227.90	40	70	80
	149	609.6	304.8	190.10	50	80	95
610 x 229	140	617.0	230.1	178.30	50	80	95
	125	611.9	229.0	159.50	55	90	105
	113	607.3	228.2	144.40	60	100	115
	101	602.2	227.6	129.10	65	110	130
533 x 210	122	544.6	211.9	155.70	50	85	95
	109	539.5	210.7	138.50	55	95	110
	101	536.7	210.1	129.70	60	100	115
	92	533.1	209.3	117.70	65	110	125
	82	528.3	208.7	104.40	70	120	140
457 x 191	98	467.4	192.8	125.20	55	90	105
	89	463.6	192.0	113.90	60	100	115
	82	460.2	191.3	104.50	60	105	125
	74	457.2	190.5	94.98	70	115	135
	67	453.6	189.9	85.44	75	130	150
457 x 152	82	465.1	153.5	104.40	60	105	120
	74	461.3	152.7	94.99	65	115	130
	67	457.2	151.9	85.41	70	125	145
457 x 152	60	454.7	152.9	75.93	80	140	160
	52	449.8	152.4	66.49	90	160	180
406 x 178	74	412.8	179.7	94.95	60	105	125
	67	409.4	178.8	85.49	70	115	140
	60	406.4	177.8	76.01	75	130	155
	54	402.6	177.6	68.42	85	145	170
406 x 140	46	402.3	142.4	58.96	90	160	185
	39	397.3	141.8	49.40	110	190	220
356 x 171	67	364.0	173.2	85.42	65	105	125
	57	358.6	172.1	72.18	75	125	145
	51	355.6	171.5	64.58	80	135	165
	45	352.0	171.0	56.96	90	155	185
356 x 127	39	352.8	126.0	49.40	95	170	195
	33	348.5	125.4	41.83	115	195	225
305 x 165	54	310.9	166.8	68.38	70	115	140
	46	307.1	165.7	58.90	80	130	160
	40	303.8	165.1	51.50	90	150	180
305 x 127	48	310.4	125.2	60.83	70	125	145
	42	306.6	124.3	53.18	80	140	160
	37	303.8	123.5	47.47	90	155	180
305 x 102	33	312.7	102.4	41.77	100	175	200
	28	308.9	101.9	36.30	115	200	225
	25	304.8	101.6	31.39	130	225	260

UNIVERSAL BEAMS: A/V FACTORS - CONTINUED

SERIAL SIZE (mm)	MASS (kg/m)	DEPTH D (mm)	WIDTH B (mm)	AREA A (cm ²)	2-SIDED (m ³)	3-SIDED (m ³)	4-SIDED (m ³)
254 x 146	43	259.6	147.3	55.10	75	120	150
	37	256.0	146.4	47.45	85	140	170
	31	251.5	146.1	40.00	100	160	200
254 x 102	28	260.4	102.1	36.19	100	170	200
	25	257.0	101.9	32.17	110	190	225
	22	254.0	101.6	28.42	125	215	250
203 x 133	30	206.8	133.8	38.00	90	145	180
	25	203.2	133.4	32.31	105	165	210
203 x 102	23	203.2	101.6	29.00	105	175	210
178 x 102	19	177.8	101.6	24.20	115	190	230
152 x 89	16	152.4	88.9	20.50	120	190	235
127 x 76	13	127.0	76.2	16.80	120	195	240


JOISTS: A/V FACTORS



SERIAL SIZE (mm)	MASS (kg/m)	DEPTH D (mm)	WIDTH B (mm)	AREA A (cm ²)	2-SIDED (m ³)	3-SIDED (m ³)	4-SIDED (m ³)
254 x 203	81.85	254.0	203.2	104.4	45	70	90
254 x 114	37.20	254.0	114.3	47.4	80	130	155
203 x 152	52.09	203.2	152.4	66.4	55	85	105
203 x 102	25.33	203.2	101.6	32.3	95	155	190
178 x 102	21.54	177.8	101.6	27.4	100	165	205
152 x 127	37.20	152.4	127.0	47.5	60	90	120
152 x 89	17.09	152.4	88.9	21.8	110	180	220
152 x 76	17.86	152.4	76.2	22.8	100	165	200
127 x 114	29.76	127.0	114.3	37.3	65	100	130
127 x 114	26.79	127.0	114.3	34.1	70	110	140
127 x 76	16.37	127.0	76.2	21.0	95	155	195
127 x 76	13.36	127.0	76.2	17.0	120	195	240
114 x 114	26.79	114.3	114.3	34.4	65	100	135
102 x 102	23.07	101.6	101.6	29.4	70	105	140
102 x 64	9.65	101.6	63.5	12.3	135	215	270
102 x 44	7.44	101.6	44.4	9.5	155	260	305
89 x 89	19.35	88.9	88.9	24.9	70	105	145
76 x 76	14.67	76.2	80.0	19.1	80	120	165
76 x 76	12.65	76.2	76.2	16.3	95	140	185

A/V TABLES


UNIVERSAL COLUMNS: A/V FACTORS



SERIAL SIZE (mm)	MASS (kg/m)	DEPTH D (mm)	WIDTH B (mm)	AREA A (cm ²)	2-SIDED (m ³)	3-SIDED (m ³)	4-SIDED (m ³)
356 x 406	634	474.7	424.1	808.1	10	15	20
	551	455.7	418.5	701.8	10	20	25
	467	436.6	412.4	595.5	15	20	30
	393	419.1	407.0	500.9	15	25	35
	340	406.4	403.0	432.7	20	30	35
	287	393.7	399.0	366.0	20	30	45
	235	381.0	395.0	299.8	25	40	50
356 x 368	202	374.7	374.4	257.9	30	45	60
	177	368.3	372.1	225.7	35	50	65
	153	362.0	370.2	195.2	40	55	75
	129	355.6	368.3	164.9	45	65	90
305 x 305	283	365.3	321.8	360.4	20	30	40
	240	352.6	317.9	305.6	20	35	45
	198	339.9	314.1	252.3	25	40	50
	158	327.2	310.6	201.2	30	50	65
	137	320.5	308.7	174.6	35	55	70
	118	314.5	306.8	149.8	40	60	85
	97	307.8	304.8	123.3	50	75	100
254 x 254	167	289.1	264.5	212.4	25	40	50
	132	276.4	261.0	167.7	30	50	65
	107	266.7	258.3	136.6	40	60	75
	89	260.4	255.9	114.0	45	70	90
	73	254.0	254.0	92.9	55	80	110
203 x 203	86	222.3	208.8	110.1	40	60	80
	71	215.9	206.2	91.1	45	70	95
	60	209.6	205.2	75.8	55	80	110
	52	206.2	203.9	66.4	60	95	125
	46	203.2	203.2	58.8	70	105	140
152 x 152	37	161.8	154.4	47.4	65	100	135
	30	157.5	152.9	38.2	80	120	160
	23	152.4	152.4	29.8	100	155	205

Full tables of structural sections can be found in the Promat Passive Fire Protection Handbook.

CHANNELS: A/V FACTORS



SERIAL SIZE (mm)	MASS (kg/m)	DEPTH D (mm)	WIDTH B (mm)	AREA A (cm ²)	2-SIDED (m ³)	3-SIDED (m ³)	3-SIDED (m ³)	4-SIDED (m ³)
432 x 102	65.54	431.8	101.6	83.49	65	115	75	130
381 x 102	55.10	381.0	101.6	70.19	70	125	85	140
305 x 102	46.18	304.8	101.6	58.83	70	120	85	140
305 x 89	41.69	304.8	88.9	53.11	75	130	90	150
254 x 89	35.74	254.0	88.9	45.52	75	130	95	150
254 x 76	28.29	254.0	76.2	36.03	90	160	115	185
229 x 89	32.76	228.6	88.9	41.73	75	130	95	150
229 x 76	26.06	228.6	76.2	33.20	90	160	115	185
203 x 89	29.78	203.2	88.9	37.94	75	130	100	155
203 x 76	23.82	203.2	76.2	30.34	90	160	115	185
178 x 89	26.81	177.8	88.9	34.15	80	130	105	155
178 x 76	20.84	177.8	76.2	26.54	95	165	125	190
152 x 89	23.84	152.4	88.9	30.36	80	130	110	160
152 x 76	17.88	152.4	76.2	22.77	100	165	135	200
127 x 64	14.90	127.0	63.5	18.98	100	165	135	200
102 x 51	10.42	101.6	50.8	13.28	115	190	155	230
76 x 38	6.70	76.2	38.1	8.53	135	225	180	270

Full tables of structural sections can be found in the Promat Passive Fire Protection Handbook.

BOARD THICKNESS (REQUIRED FOR STRUCTURAL STEEL)

PROMAT VERMICULUX®

FIRE RESISTANCE (minutes)	BOARD THICKNESS								
	20MM	25MM	30MM	35MM	40MM	45MM	50MM	55MM	60MM
30	260								
60	260								
90	202	260							
120	114	159	215	260					
180	61	81	103	128	156	189	227	260	
240	-	54	67	82	98	115	134	155	178

Maximum A/V section factor (m⁻¹)

PROMAT SUPALUX®

Limiting steel temperature 550°C

FIRE RESISTANCE (minutes)	BOARD THICKNESS			
	6MM	9MM	12MM	15MM
30	260			
60	64	107	158	224
90	-	52	73	96
120	-	-	47	61

Maximum A/V section factor (m⁻¹)

- NOTES: 1. If an A/V factor falls on a line between two thicknesses, select the lower thickness.
2. Any thickness greater than the minimum required can be used if appropriate.

PROMAT PROMATECT® - 250

Beams - limiting steel temperature 550°C

FIRE RESISTANCE (minutes)	BOARD THICKNESS									
	12MM	15MM	18MM	20MM	22MM	25MM	30MM (15+15)	33MM (15+18)	35MM (15+20)	38MM (18+20)
30	260									
60	177	260								
90		102	135	162	192	249	260			
120				92	106	129	176	211	238	260
150						87	114	132	146	168

PROMAT PROMATECT® - 250

Columns - limiting steel temperature 550°C

FIRE RESISTANCE (minutes)	BOARD THICKNESS									
	12MM	15MM	18MM	20MM	22MM	25MM	30MM (15+15)	33MM (15+18)	35MM (15+20)	38MM (18+20)
30	260									
60	209	260								
90	82	114	153	185	223	260	260			
120		68	87	102	118	145	201	243	260	260
150			61	70	80	96	126	147	163	190

GLASROC F

FIRE RESISTANCE (minutes)	BOARD THICKNESS				
	15MM	20MM	25MM	30MM	35MM
30	260				
60	240	260			
90	-	150	250	260	
12	-	-	130	140	260

Maximum A/V section factor (m⁻¹)

NOTE: 35mm board should be made up of two layers, 15mm plus 20mm thick.

BOARD THICKNESS (REQUIRED FOR STRUCTURAL STEEL)

KNAUF FIREBOARD

FIRE RESISTANCE (minutes)	BOARD THICKNESS						
	15MM	20MM	25MM	30MM	35MM	40MM	45MM
30	260						
60	260						
90	88	146	242	260			
120	-	-	95	131	179	247	260

Maximum A/V section factor (m⁻¹)

KNAUF ROCKSILK FIRETECH 160 FOR STEEL COLUMNS

FIRE RESISTANCE (minutes)	BOARD THICKNESS																			
	20MM	25MM	30MM	35MM	40MM	45MM	50MM	55MM	60MM	65MM	70MM	75MM	80MM	85MM	90MM	95MM	100MM	105MM	110MM	
30	260																			
60	260																			
90	133	170	207	246	260															
120	78	98	119	140	162	184	207	230	254	260										
180	-	-	4	75	87	98	110	121	133	145	157	169	182	194	207	219	232	245	260	
240	-	-	44	52	59	67	75	82	90	98	106	114	122	130	138	147	155	163	172	

Maximum A/V section factor (m⁻¹)

KNAUF ROCKSILK FIRETECH 160 FOR STEEL BEAMS

FIRE RESISTANCE (minutes)	BOARD THICKNESS																			
	20MM	25MM	30MM	35MM	40MM	45MM	50MM	55MM	60MM	65MM	70MM	75MM	80MM	85MM	90MM	95MM	100MM	105MM	110MM	
30	260																			
60	260																			
90	120	189	232	260																
120	71	107	130	153	177	201	226	251	260											
180	-	-	69	81	93	105	117	130	143	156	169	182	195	209	222	236	250	260		
240	-	-	47	55	63	71	79	88	96	104	113	122	130	139	148	157	166	175	184	

Maximum A/V section factor (m⁻¹)

KNAUF ROCKSILK FIRETECH 160 FOR STEEL COLUMNS

FIRE RESISTANCE (minutes)	BOARD THICKNESS											
	25MM	30MM	35MM	40MM	45MM	50MM	60MM	70MM	80MM	90MM	100MM	110MM
30	260											
60	260											
90	149	207	260									
120	65	83	104	128	155	187	260					
180	-	38	45	54	62	72	92	116	143	176	214	260
240	-	24	29	34	39	44	55	68	81	96	124	129

Maximum A/V section factor (m⁻¹)

ROCKWOOL BEAMCLAD 150 FOR STEEL BEAMS

FIRE RESISTANCE (minutes)	BOARD THICKNESS											
	25MM	30MM	35MM	40MM	45MM	50MM	60MM	70MM	80MM	90MM	100MM	110MM
30	260											
60	260											
90	260											
120	96	130	168	216	260							
180	-	50	61	73	85	99	131	170	219	260		
240	-	31	37	43	50	57	73	90	109	131	157	186

Maximum A/V section factor (m⁻¹)

PLEASE NOTE: Thickness can be made up of either one or two layers

BOARD THICKNESS (REQUIRED FOR STRUCTURAL STEEL)

PROMAT TD BOARD® - TABLE 1

Limiting steel temperature 550°C Clip fixings or welded pin fixings and 'dry joints' when protecting beams supporting concrete decks.

FIRE RESISTANCE (minutes)	BOARD THICKNESS							
	25MM	30MM	35MM	40MM	45MM	50MM	55MM	60MM
30	260							
60	260							
90	201	260						
120	77	100	126	158	195	240	260	260
180								
240								

Please note: Please contact Promat UK Technical Services Department on 01344 381 400 for further information.

PROMAT TD BOARD® - TABLE 2

Limiting steel temperature 620°C Clip fixings or welded pin fixings and 'dry joints' when protecting beams (loading in accordance with BS 5950-8)

FIRE RESISTANCE (minutes)	BOARD THICKNESS							
	25MM	30MM	35MM	40MM	45MM	50MM	55MM	60MM
30	260							
60	260							
90	260							
120	95	124	159	200	251	260	260	260
180								
240								

- PLEASE NOTE:
1. The above thicknesses have been determined using a steel failure temperature of 550°C (Table 1) and 620°C (Table 2). For other temperatures please consult Promat Technical Department.
 2. The thicknesses given in Table 1 are normally required for vertical steel columns and for horizontal steel beams not physically connected to a concrete deck or a profiled steel deck with a concrete topping.
 3. The thicknesses given in Table 2 can only be used to protect horizontal steel beams physically connected and directly supporting a concrete deck or a profiled steel deck with a concrete topping.
 4. Any thickness greater than the minimum required can be used if appropriate.

PROMAT VICUTUBE®

Please contact Promat Technical Services dept on 01344 381400 for information