

PROMAT FIRE PROTECTION

Promat Supalux®	4
Promat Supalux® Door Facings	4
Promat Supalux® Bevelled Edge Ceiling Panels	4
Promat Supalux® Thatch	4
Impregnated Promat Supalux®	5
Promat Flamebraker™ Supalux®	5
Promat Flamebraker™ Masterboard®	5
Promat Flamebraker™ Grid	5
Promat Product Selector Guide	6
Promat Masterboard®	8
Promat Masterboard® Door Facings	8
Promat Masterboard® Rebated Edge	8
Promat Vermiculux®	9
Promat Vicutube®	9
Promat Vicubond® WR Adhesive	9
Promat TD Board® - Plain (Formerly Promalit)	10
Promat TD Board® - Foil Faced (Formerly Promalit)	10
Promat TD Board® - Tissue Faced	10
Promat Promatect® - L500	10
Promat Promatect® - 250	11
Promat Vicuclad®	11
Promat TL Board®	11
Fixing Guide	11

PROMAT FIRE STOPPING

Promat Promaseal® Fire Barrier	12
Promat Promaseal® Fire Barrier Coating	12
Promat Promaseal® Fire Compound	12
Promat Promaseal® Fire Compound - Extra Strength	12
Promat Promaseal® Intumescent Acrylic Sealant	12
Promat Promaseal® Silicone Sealant	12
Promat Promaseal® RSB	13
Promat Promaseal® Fire Pillow	13
Promat Promaseal® Pipewrap	13
Promat Promaseal® Unicollar®	13
Promat Promaseal® Expansion Joint Strip	13

BRITISH GYPSUM SPECIALIST BOARDS

Glasroc F Multiboard	14
Glasroc F Firecase	14
Glasroc F Soffitline	14
FlameLynr Components	14
Glasroc F Flameline	14
Glasroc F Firecase Screws	14

ROCKWOOL FIREPRO

Linear Firestop 2	16
Linear Firestop 3A	16
Fire Barriers	17
SP Firestop Slabs	17
SP Firestop Fixing Brackets	17
Spiral Screws	17
Beamclad Clips	17
Beamclad Washes	17
Firepro Glue	17
Beamclad	18
Firestop Compound	18
2 Hour Firestop Pipe Collars	18
4 Hour Firestop Pipe Collars	18
Ablative Liquid	18

2 Hour and 4 Hour Ablative Batts	19
2 Hour Intumescent Pipe wraps	19
4 Hour Intumescent Pipe wraps	19
Insulated Fire Sleeves	19
Intumescent Pillows	19
Acoustic Intumescent Sealant	19

SPEEDLINE

Speedline Fire Stop Strips	20
Speedline Fire Stop Blocks	20
Speedline Wall Cavity Fire Barrier	20
Speedline Raised Access Floor Fire Barrier	20
Speedline Partition Head Barrier	20
Speedline Party Wall Fire Closer	20
Speedline Access Panels	21
Speedline Acoustic Firecaps	21

KNAUF INSULATION

Rocksilk Firetech Slab - Plain	22
Rocksilk Firetech Accessories	22
Knauf Fireboard	22
Knauf Fireboard Accessories	22
Rocksilk Smoke & Fire Barrier	22
Rocksilk Firetech Dry Fix Noggin Slab	22
Rocksilk Pyroduct Slab	22

EUROFORM VERSA BUILDING BOARDS

Versapanel® - Class 0 Cement Bonded Particle Board	24
Versafire® - A1 - Non-Combustible Building Board	24
Versaliner™ JPM - Class 0 Gypsum Fibreboard	24
Versa Weather Pro-L™ - Class 0 Calcium Silicate Board	24
Versa Soben FP-900™ - A1-Non-Combustible Silicate Board	24
Rendaboard™ - Class 0 Building Board	24

FIREHALT

Fire Curtain & Accessories	25
Fire Curtain Fixings	25
Penetration Accessories	25
Firehalt Gap Seal Tape	25

TENMAT FIRE STOPPING

Pipe Fire Sleeves	26
Fire & Acoustic Cable Basket Sleeves	26
Switch Box Covers & Inserts	26
Vent Duct Fire Sleeves	27
Vent Duct Wraps	27
Ceiling Fan Fire Sleeves	27
Ventilated Fire Barriers	27
Light Covers & Fire Hoods	27

FIRESTEM FIRE STOP PENETRATING SEALS

Firestem Intumescent Mastic	28
Firestem Fire Barriers	28
Firestem Ablative Coatings	28
Firestem Fire Cement	28
Firestem Pipe Collars	28
Firestem Pipe Wraps	29
Firestem Fire Pillows	29
Firestem Expansion Joints	29
Firestem Doorstrips	29

A/V TABLES	30/32
-------------------	--------------

BOARD THICKNESS	33/35
------------------------	--------------

**PROMAT SUPALUX®**

UP TO 240 MINUTES FIRE PROTECTION ON WALLS, CEILINGS, DUCTS AND PARTITIONS.

CODE	THICKNESS (MM)	LENGTH (MM)	WIDTH (MM)	BOARDS PER PALLET	£ PRICE PER BOARD	£ PRICE PER M ²
30020						
1004	6	2440	1220	50	52.26	17.55
1006	6	2500	1200	50	52.65	17.55
2200	9	2440	1220	40	77.73	26.10
1805	9	2500	1200	40	78.34	26.10
3600	12	2440	1220	30	102.94	34.58
3595	12	2500	1200	30	103.13	34.58
4154	15	2440	1220	25	141.52	47.54
4156	15	2500	1200	25	142.61	47.54
4204	20	2500	1250	20	198.10	63.38
4254	25	2500	1250	15	247.60	79.23

Note: Prices for other sizes of Supalux are available on request.

PROMAT SUPALUX® DOOR FACINGS

30030						
0028	6	2134	915	50	45.69	23.40
0061	9	2134	915	40	67.90	34.74

PROMAT SUPALUX® BEVELLED EDGE CEILING PANELS

CODE	THICKNESS (MM)	LENGTH (MM)	WIDTH (MM)	£ PRICE PER TILE	£ PRICE PER M ²
30045					
0508	9	600	600	11.67	32.43
060X	9	610	610	12.07	32.43
0756	9	1200	600	23.33	32.43
0789	9	1220	610	24.12	32.43
1001	9	1200	1200	46.70	32.43
1002	9	1220	1220	48.26	32.43
125X	12	600	600	20.71	57.53

PROMAT SUPALUX® THATCH

CODE	THICKNESS (MM)	LENGTH (MM)	WIDTH (MM)	BOARDS PER PALLET	£ PRICE PER BOARD	£ PRICE PER M ²
30020						
1780	9	1220	1200	80	33.80	23.09
3604	12	1220	1200	60	44.77	30.58

IMPREGNATED PROMAT SUPALUX®

CODE	THICKNESS (MM)	LENGTH (MM)	WIDTH (MM)	BOARDS PER PALLET	£ PRICE PER BOARD	£ PRICE PER M ²
30020						
1806	9	2500	1200	40	82.27	27.42
4157	15	2500	1200	25	POA	POA

PROMAT FLAMEBRAKER™ SUPALUX®

CODE	THICKNESS (MM)	LENGTH (MM)	WIDTH (MM)	£ PRICE PER BOARD	£ PRICE PER M ²
30025					
0702	6	1200	600	12.70	17.34
0757	6	1800	600	19.05	17.64
0804	6	2400	600	25.39	17.63
3011	9	1200	600	18.89	26.23
3755	9	1800	600	28.34	26.24
4000	9	2400	600	37.78	26.23

PROMAT FLAMEBRAKER™ MASTERBOARD®

CODE	THICKNESS (MM)	LENGTH (MM)	WIDTH (MM)	£ PRICE PER BOARD	£ PRICE PER M ²
32060					
1184	6	1800	600	11.46	10.61
1242		2400	600	15.28	10.61

PROMAT FLAMEBRAKER™ GRID

CODE	LENGTH (MM)	WIDTH (MM)	HEIGHT (MM)	DESCRIPTION	WT/CARTON (KG)	NO. PER CARTON	£ PRICE PER PACK	£ PRICE PER LINEAR M
35095								
0058	3600	35	35	Galv. Main Tee	33	20	154.34	2.14
015X	603	35	35	Galv. Cross Tee	12	40	56.49	2.34
0251	3600	25	25	Galv. 90 Angle	24	20	111.82	1.55
0557	300	18	-	Fixing Strap	8	50	19.23	-
0604	450	18	-	Fixing Strap	12	50	19.79	-
0659	-	-	-	Spring Wedge	5	1000	227.88	-
0750	140	15	-	Insulation Clip	3	200	69.51	-





PROMAT MASTERBOARD®

CODE	THICKNESS (MM)	LENGTH (MM)	WIDTH (MM)	BOARDS PER PALLET	M ² PER PALLET	£ PRICE PER BOARD	£ PRICE PER M ²
32010							
1002	6	2440	1220	50	148.84	31.58	10.60
1501	9	2440	1220	40	119.07	66.71	22.40
1964	12	2440	1220	30	89.3	87.99	29.55

Note: Prices for other sizes of Masterboard are available on request.

PROMAT MASTERBOARD® DOOR FACINGS

32020							
0026	6	2134	914	50		31.54	16.16

PROMAT MASTERBOARD® REBATED EDGE

32010							
1502	9	2440	1220	40		77.77	53.12

PROMAT VERMICULUX®

FIRE RESISTANT CALCIUM SILICATE BOARD CAPABLE OF 240 MINUTES FIRE PROTECTION TO STRUCTURAL STEEL

CODE	THICKNESS (MM)	LENGTH (MM)	WIDTH (MM)	BOARDS PER PALLET	£ PRICE PER BOARD	£ PRICE PER M ²
35010						
0224	20	1220	1220	40	34.79	23.38
0279	25	1220	1220	30	42.49	28.56
0326	30	1220	1220	26	55.43	37.25
0370	35	1220	1220	22	68.44	46.00
0428	40	1220	1220	20	86.13	57.88
0472	45	1220	1220	17	104.03	69.92
052X	50	1220	1220	15	114.66	77.06
0574	55	1220	1220	14	125.97	84.65
0621	60	1220	1220	13	136.71	91.87

1220mm x 1220mm rebated on opposite edges.



PROMAT VICUTUBE®

EXFOLIATED VERMICULITE FOR STEELWORK, PLASTIC OR GAS PIPES

CODE	WALL THICKNESS (MM)	INSIDE DIAMETER (MM)	SECTIONS PER PALLET	£ PRICE PER SEMI CIRCULAR SECTION
37013				
210X	30	60	240	6.49
2201	30	76	220	6.83
2303	30	89	200	7.18
2405	30	114	114	8.56
2460	30	140	100	10.02
2482	30	168	100	11.77
2493	30	219	80	13.61
2507	40	60	180	7.74
2609	40	76	150	8.14
2700	40	89	150	8.56
2802	40	114	100	10.18
2904	40	140	72	12.05
3102	40	168	72	13.99
3109	40	194	72	15.09
3204	40	219	72	17.08
3210	40	245	54	18.48
3215	40	273	48	19.75
342X	50	60	180	10.07
3430	50	76	100	10.57
3441	50	89	76	11.28
3452	50	114	72	13.57

Note: Carriage charge may apply (Sections are 667mm long)



PROMAT VICUBOND® WR ADHESIVE

CODE	DESCRIPTION	£ PRICE PER DRUM
37020		
0108	10 Litre Drum	44.71

PROMAT TD BOARD® - PLAIN (FORMERLY PROMALIT)

CODE	THICKNESS (MM)	LENGTH (MM)	WIDTH (MM)	BOARDS PER PALLET	M ² PER PALLET	£ PRICE PER BOARD	£ PRICE PER M ²
36083							
0254	25	2000	1200	45	86.40	POA	POA
0304	30	2000	1200	40	77.76	POA	POA
0354	35	2000	1200	32	64.80	POA	POA
0404	40	2000	1200	30	56.16	POA	POA
0454	45	2000	1200	24	51.84	POA	POA
0504	50	2000	1200	24	47.52	POA	POA
0554	55	2000	1200	20	43.20	POA	POA
0600	60	2000	1200	20	48.00	POA	POA

PROMAT TD BOARD® - FOIL FACED (FORMERLY PROMALIT)

36083							
0255	25	2000	1200	45	86.40	POA	POA
0305	30	2000	1200	40	77.76	POA	POA
0355	35	2000	1200	32	64.80	POA	POA
0405	40	2000	1200	30	56.16	POA	POA
0455	45	2000	1200	24	51.84	POA	POA
0505	50	2000	1200	24	47.52	POA	POA
0555	55	2000	1200	20	43.20	POA	POA
0601	60	2000	1200	20	48.00	POA	POA

PROMAT TD BOARD® - TISSUE FACED

CODE	THICKNESS (MM)	LENGTH (MM)	WIDTH (MM)	M ² PER PALLET	£ PRICE PER BOARD	£ PRICE PER M ²
36083						
0201	25	2000	1200	45	12.00	5.00
0306	30	2000	1200	40	14.50	6.04
0359	35	2000	1200	32	16.97	7.07
0408	40	2000	1200	30	19.32	8.05
0508	50	2000	1200	24	24.22	10.09
0600	60	2000	1200	20	29.06	12.11

PROMAT PROMATECT® - L500

CODE	THICKNESS (MM)	LENGTH (MM)	WIDTH (MM)	£ PRICE PER BOARD	£ PRICE PER M ²
36078					
0205	20	2500	1200	122.79	40.93
0255	25	2500	1200	139.32	46.44
0305	30	2500	1200	167.37	55.79
0355	35	2500	1200	192.27	64.09
0405	40	2500	1200	230.88	76.96
0525	50	2500	1200	337.26	112.42
0527	52	2500	1200	350.76	116.92



PROMAT PROMATECT® - 250

BOARD FOR FIRE PROTECTION OF STRUCTURAL STEELWORK

CODE	THICKNESS (MM)	LENGTH (MM)	WIDTH (MM)	STACK QUANTITIES	£ PRICE PER BOARD	£ PRICE PER M ²
36079						
0126	12	2500	1200	30	48.53	16.17
0156	15	2500	1200	30	64.30	21.44
0186	18	2500	1200	25	81.03	27.01
0206	20	2500	1200	25	90.52	30.17
0226	22	2500	1200	25	100.09	33.36
0256	25	2500	1200	20	119.13	39.72
0030	30	2500	1200	15	125.72	41.91

PROMAT VICUCLAD®

CODE	THICKNESS (MM)	LENGTH (MM)	WIDTH (MM)	BOARDS PER PALLET	£ PRICE PER BOARD	£ PRICE PER M ²
37010						
0180	18	1000	610	120	13.65	22.38
025X	25	1000	610	88	14.77	24.20
0307	30	1000	610	72	17.25	28.26
0351	35	1000	610	60	19.71	32.31
0409	40	1000	610	54	25.01	40.97
0453	45	1000	610	48	30.28	49.64
0500	50	1000	610	42	36.90	60.48
0555	55	1000	610	40	43.52	71.33
0602	60	1000	610	34	48.80	80.04
0759	65	1000	610	32	54.13	88.73
0781	70	1000	610	30	57.32	93.97

PROMAT TL BOARD®

BEVELLED EDGE CALCIUM SILICATE BOARD BONDED TO PHENOLIC INSULATION FOR THERMAL INSULATION OF CONCRETE SOFFITS.

CODE	THICKNESS (MM)	STACK QUANTITY	£ PRICE PER BOARD	£ PRICE PER M ²
32103				
0565	56	17	94.18	32.70
0664	66	15	104.40	36.24
0764	76	13	117.26	40.71
0864	86	11	131.16	45.54
0964	96	10	149.79	52.00
1064	106	9	163.67	56.83
1164	116	8	POA	POA

All boards are 2397mm x 1197mm.

FIXING GUIDE

Ceiling panel size	600 x 600	1200 x 600	1200 x 1200
No. fixing holes per panel	6 or 8	12	19



PROMAT FIRE STOPPING

PROMAT PROMASEAL® FIRE BARRIER

50MM THICK SLAB OF MINERAL FIBRE WITH WHITE COATING. UP TO 120 MINUTES CAN BE ACHIEVED WITH ONE LAYER & 240 MINUTES WITH 2 LAYERS IN FLOORS & WALLS.

CODE	WIDTH (MM)	LENGTH (MM)	QUANTITY PER PALLET	£ PRICE EACH
37021				
3622	1200	600	40	27.90

PROMAT PROMASEAL® FIRE BARRIER COATING

CODE	QUANTITY PER TUB	£ PRICE PER TUB
37021		
1305	10kg	33.26

PROMAT PROMASEAL® FIRE COMPOUND

FOR FIRE SEALING AROUND SERVICE PENETRATIONS IN WALLS & FLOORS.

CODE	VOLUME PER BAG (KG)	QUANTITY PER PALLET	£ PRICE PER BAG
37021			
0501	25	40	21.52

PROMAT PROMASEAL® FIRE COMPOUND - EXTRA STRENGTH

37021			
0495	20	50	17.83

PROMAT PROMASEAL® INTUMESCENT ACRYLIC SEALANT

WATER BASED ACRYLIC MASTIC FOR SEALING HOLES UP TO 35MM WIDE.

CODE	COLOUR	CARTRIDGE (ML)	BOX QUANTITY	PALLET QUANTITY	£ PRICE PER BOX
37021					
0402	Grey	310	12	1536 Tubes/128 Boxes	28.27
0403	White	310	12	1536 Tubes/128 Boxes	28.27

PROMAT PROMASEAL® SILICONE SEALANT

FIRE PROTECTION MASTIC FOR SEALING SMALL GAPS PARTICULARLY FOR HIGH AMBIENT TEMPERATURES & WATER EXPOSURE.

37021					
0311	Grey	310	12	1200/100 boxes	90.14
0312	White	310	12	1200/100 boxes	90.14



PROMAT PROMASEAL® RSB

PREVENTS THE PASSAGE OF FIRE IN THE VOID BETWEEN A RAIN SCREEN SYSTEM & THE SUBSTRATE.

CODE	SIZE (MM)	£ PRICE (M)
36089	100	44.88
	125	47.75
	150	50.61

PROMAT PROMASEAL® FIRE PILLOWS

BAGS CONTAINING INTUMESCENT MATERIAL & ADDITIVES FOR SERVICE OPENINGS.

CODE		SIZE (MM)	PILLOW PER BOX	£ PRICE PER BOX
37021				
4301	Large	330 x 200 x 25	50	POA
4302	Small	330 x 200 x 45	25	POA
4300	Finger	300 x 100 x 35	50	POA

PROMAT PROMASEAL® PIPEWRAP

WRAPPED AROUND PLASTIC PIPES THEY CAN ACHIEVE FIRE RESISTANCE OF UP TO 240 MINUTES.

CODE	PIPE OD (MM)	£ PRICE PER COLLAR
37021		
2024	55	4.62
2029	82	5.12
2034	110	6.60
2039	160	15.38

PROMAT PROMASEAL® UNICOLLARS®

PROTECTS PLASTIC PIPES WHICH PASS THROUGH FIRE RATED WALLS & FLOORS. SUPPLIED IN CONTINUOUS STRIP FORM WHICH IS CUT TO LENGTH & ATTACHED TO WALL OR FLOOR.

CODE	LENGTH (MM)	QUANTITY PER BOX	£ PRICE PER BOX
37021			
1901	2250	1	57.26

Each length has 146 segments. One length is sufficient for 5 x 110mm collars.

Quantity of segments per pipe

Pipe OD (mm)	40	50	65	80	100	125	150
Number of segments	15	17	21	24	29	33	40

PROMAT PROMASEAL® EXPANSION JOINT STRIPS

USED FOR SEALING MOVEMENT JOINTS BETWEEN COMPARTMENT WALLS & FLOORS.

CODE	SIZE (MM) T X D	£ PRICE PER STRIP
37021		
	12 x 12	POA
	29 x 12	POA
	32 x 20	POA
	53 x 20	POA
	61 x 35	POA
	90 x 50	POA
	126 x 100	POA
	147 x 125	POA
	170 x 100	POA

All strips are 1000mm long



GLASROC F MULTIBOARD

CODE	THICKNESS (MM)	LENGTH (MM)	WIDTH (MM)	WEIGHT PER PALLET (TONNES)	BOARDS PER PALLET	£ PRICE PER BOARD	£ PRICE PER M ²
39515							
0961	6	2400	1200	0.69	40	43.60	15.14
0983	6	3000	1200	0.86	40	54.50	15.14
1104	10	2400	1200	1.14	40	83.87	29.12
112X	10	3000	1200	1.43	40	104.83	29.12
1206	12.5	2400	1200	1.12	32	110.16	38.25
128X	12.5	3000	1200	1.41	32	137.70	38.25

GLASROC F FIRECASE

39514							
0155	15	2400	1200	1.25	32	59.85	20.78
1200	20	2000	1200	1.82	40	59.14	24.64
2255	25	2000	1200	1.69	30	73.37	30.57
2300	30	2000	1200	1.34	20	82.90	34.54

GLASROC F SOFFITLINE

39517							
6264	26	2400	1200	0.76	30	56.28	19.54
6364	36	2400	1200	0.52	20	67.39	23.40
6464	46	2400	1200	0.48	18	76.06	26.41
6456	56	2400	1200	0.44	14	92.51	32.12
6466	66	2400	1200	0.4	12	106.82	37.09
6476	76	2400	1200	0.34	10	120.76	41.93
6486	86	2400	1200	0.36	10	151.63	52.65

FLAMELYNER COMPONENTS

CODE	COMPONENT PART	LENGTH	DESCRIPTION	PACK QUANTITY	WEIGHT PER PACK (KG)	£ PRICE PER PACK
39513						
0010	GT1	3600	Main T	20	33	POA
0020	GT2	603	Cross T	40	12	POA
0030	GT3	-	Spring Wedge	1000	5	POA
0040	GT4A	300	Bracing Strap	50	8	POA
0050	GT4B	450	Bracing Strap	50	12	POA
0060	GT5	3000	24mm x 24mm Angle	30	18	POA

GLASROC F FLAMELINE

CODE	THICKNESS (MM)	LENGTH (MM)	WIDTH (MM)	BOARDS PER PALLET	M ² PER PALLET	£ PRICE PER BOARD	£ PRICE PER M ²
39513							
1064	6	2400	600	40	57.6	19.68	13.67
1104	10	2400	600	40	57.6	31.55	26.29

GLASROC F FIRECASE SCREWS

CODE	LENGTH (MM)	BOX QUANTITY	S'DRIVER BITS INC.	WEIGHT PER BOX (KG)	£ PRICE PER BOX
39514					
9400	40	1000	2	2.4	27.82
9500	50	1000	2	3.2	34.90
9588	58	1000	2	3.8	39.91
9590	70	500	1	2.3	23.07

Used to fix Glasroc F Firecase

LINEAR FIRESTOP 2

CODE	THICKNESS (MM)	LENGTH (MM)	WIDTH (MM)	LINEAR METRE PER CARTON	£ PRICE PER LINEAR M
16024					
7406	12.5	1000	100	144	2.11
7405	20	1000	100	90	3.25
7636	30	1000	100	60	4.88
7505	40	1000	100	42	5.69
7507	50	1000	100	36	6.43
7508	60	1000	100	30	7.24
7509	70	1000	100	24	8.00
7510	80	1000	100	18	8.73
7511	90	1000	100	18	9.50
7660	100	1000	100	18	10.26
7516	12.5	1000	150	96	3.57
7517	20	1000	150	60	5.69
7550	30	1000	150	40	7.40
751X	40	1000	150	28	8.53
7524	50	1000	150	24	9.61
7532	70	1000	150	16	11.93
7533	80	1000	150	12	13.04
7535	100	1000	150	12	15.34
7536	12.5	1000	200	72	4.71
7537	20	1000	200	45	7.59
7302	30	1000	200	30	9.89
7540	50	1000	200	18	12.92
7547	90	1000	200	9	18.99
7310	100	1000	200	9	20.52

LINEAR FIRESTOP 3A

CODE	THICKNESS (MM)	LENGTH (MM)	WIDTH (MM)	LINEAR METRE PER CARTON	£ PRICE PER LINEAR M
16024					
8880	10	1000	300	60	8.56
888X	15	1000	300	40	12.88
8901	20	1000	300	30	17.10
8902	25	1000	300	24	19.71
8903	30	1000	300	20	22.28
8904	40	1000	300	14	25.54
8914	45	1000	300	12	26.45
8915	50	1000	300	12	29.00
8916	60	1000	300	10	32.42
8917	70	1000	300	8	35.79
8918	80	1000	300	6	39.25
8919	90	1000	300	6	42.45
8920	100	1000	300	6	46.13

FIRE BARRIER

CODE	THICKNESS (MM)	LENGTH (MM)	WIDTH (MM)	ROLLS PER PACK	AREA PER PK (M ²)	£ PRICE PER M ²
16066						
0504	50	4000	1000	1	4	24.26
0550	60	3500	1000	1	3.5	29.31

Extra charge for foil facing to one side: £1.52/m² net must be added.

Extra charge for wire on both sides: £1.79/m² net must be added.

1/2 Hour = one 50mm layer, 1 Hour = two 50mm layers, 2 Hours = two 60mm layers, foil faced

SP FIRESTOP SLABS

CODE	TYPE	THICKNESS (MM)	LENGTH (MM)	WIDTH (MM)	PIECES PER CARTON	AREA PER PK (M ²)	£ PRICE PER M ²
16097							
0602	SP60	75	1000	650	4	2.34	147.12
1202	SP120	90	1000	650	4	2.34	176.72

SP FIRESTOP FIXING BRACKETS

CODE	TYPE	PIECES PER BOX	£ PRICE PER BOX
16097			
9001	SP/S	50	80.68
9002	SP/L	50	94.07

SPIRAL SCREWS

CODE	LENGTH (MM)	£ PRICE PER 1000
41988		
0040	40	23.80
0050	50	18.36
0065	65	29.27
0075	75	32.12
0090	90	36.18
0100	100	41.18
0110	110	49.97
0140	140	60.70
0165	165	70.20
0180	180	73.79

BEAMCLAD CLIPS

CODE	SIZE	£ PRICE PER BOX
16024		
0100	1000/BOX	194.88

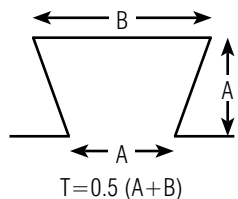
BEAMCLAD WASHERS

0101	2000/BOX	77.81
-------------	----------	--------------

FIREPRO GLUE

CODE	SIZE	£ PRICE PER TUB
0177	17kg tub	126.62





BEAMCLAD

CODE	THICKNESS (MM)	LENGTH (MM)	WIDTH (MM)	PIECES PER PALLET	M ² PER PALLET	£ PRICE PER M ²
16022						
0250	25	2000	1200	45	108.0	15.72
0300	30	2000	1200	40	96.0	22.23
0350	35	2000	1200	32	76.8	26.01
0400	40	2000	1200	30	72.0	29.66
0500	50	2000	1200	24	57.6	37.09
0600	60	2000	1200	20	48.0	44.52

Extra charge for Beamclad Aluminium Faced: £1.52/m² net must be added to the plain Beamclad price.

Extra charge for Beamclad Tissue Faced: £0.71/m² net must be added to the plain Beamclad price.

FIRESTOP COMPOUND

CODE	BAG	£ PRICE PER BAG
39305		
0010	20kg	POA

2 HOUR FIRESTOP PIPE COLLARS

CODE	SIZE (MM)	£ PRICE EACH
39308		
0055	55	POA
0063	63	POA
0082	82	POA
0110	110	POA
0125	125	POA
0160	160	POA

4 HOUR FIRESTOP PIPE COLLARS

CODE	SIZE (MM)	£ PRICE EACH
39309		
0055	55	POA
0063	63	POA
0082	82	POA
0110	110	POA
0125	125	POA
0160	160	POA

ABLATIVE LIQUID

CODE	SIZE	£ PRICE PER TUB
16193		
0030	5 Litre tub	27.59

2 HOUR AND 4 HOUR ABLATIVE BATTS

CODE	SIZE (MM)	£ PRICE EACH
39302		
0600	1000 x 600 x 60	14.79

2 HOUR INTUMESCENT PIPE WRAPS

CODE	SIZE (MM)	£ PRICE EACH
39306		
0055	55	POA
0063	63	POA
0082	82	POA
0110	110	POA
0125	125	POA
0160	160	POA

4 HOUR INTUMESCENT PIPE WRAPS

CODE	SIZE (MM)	£ PRICE EACH
39307		
0055	55	POA
0063	63	POA
0082	82	POA
0110	110	POA
0125	125	POA
0160	160	POA

INSULATED FIRE SLEEVES

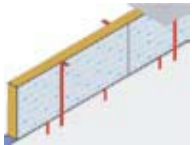
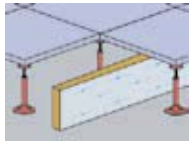
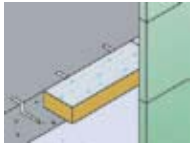
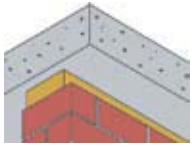
CODE	PIPE OD (MM)	THICKNESS (MM)	LENGTH (MM)	PIECES PER CARTON	£ PRICE PER LENGTH
39301					
0542	54	25	300	4	POA
0602	60	25	300	4	POA
0802	80	25	300	4	POA
1082	108	25	300	8	POA
1272	127	25	300	6	POA
1592	159	25	300	6	POA

INTUMESCENT PILLOW

CODE	SIZE (MM)	£ PRICE PER PILLOW
39300		
0350	300 x 100 x 35	POA
0351	300 x 150 x 35	POA
0352	300 x 200 x 35	POA

ACOUSTIC INTUMESCENT SEALANT

CODE	SIZE	£ PRICE PER CART
16193		
0020	310ml Cartridge	POA



SPEEDLINE FIRE STOP STRIPS

CODE	LENGTH MM	VOIDS MM	£ PRICE
HIGH DENSITY MINERAL WOOL FIRE AND SMOKE STOP FOR MEDIUM SIZE LINEAR GAPS IN BUILDINGS.			
37039	1200	10 - 100	POA

SPEEDLINE FIRE STOP BLOCKS

CODE	£ PRICE
HIGH DENSITY MINERAL WOOL FIRE STOP BLOCKS FOR APERTURES IN BUILDINGS, ESPECIALLY THE FLUTES OF METAL PROFILES.	
37040	POA

SPEEDLINE WALL CAVITY FIRE BARRIER

CODE	LENGTH MM	CAVITY WIDTHS MM	£ PRICE
FOIL FACED MINERAL WOOL FIRE AND SMOKE BARRIER FOR ALL CAVITY WALLS AND CURTAIN WALLS, HORIZONTAL AND VERTICAL USE.			
37041	1000	15 - 600	POA

Available cut to size or in slabs

SPEEDLINE RAISED ACCESS FLOOR FIRE BARRIER

CODE	VOIDS MM	£ PRICE
FOIL FACED MINERAL WOOL FIRE AND SMOKE BARRIER FOR THE CAVITIES BENEATH RAISED ACCESS FLOORS.		
37042	15 - 1000	POA

Available cut to size or in slabs

SPEEDLINE PARTITION HEAD BARRIER

CODE	LENGTHS MM	VOIDS MM	£ PRICE
FOIL FACED MINERAL WOOL FIRE AND SMOKE STOP FOR GAPS ABOVE PARTITIONS AND MASONRY WALLS.			
37043	1000 (1200mm for 50mm)	100 - 600	POA

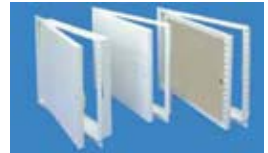
SPEEDLINE PARTY WALL FIRE CLOSER

CODE	LENGTHS MM	THICKNESS MM	WIDTH MM	SIDE OVERLAP MM	BOTTOM OVERLAP MM	£ PRICE
SEMI RIGID MINERAL WOOL TO POLYETHYLENE DPC CAVITY CLOSERS FOR THE JUNCTIONS AT PARTY WALLS.						
37044						
Mineral Wool Insulation	1200	50	300			POA
		65				POA
		75				POA
		85				POA
		90				POA
		100				POA
DPC - Polyethylene	1300			40	100	POA

Non standard sizes and DPC offsets are available

SPEEDLINE ACCESS PANELS

CODE	DESCRIPTION	SIZE (MM)	£ PRICE EACH
ACCESS PANELS ARE AVAILABLE FOR BOTH WALLS AND CEILINGS WITH METAL OR PLASTERBOARD DOORS, BEADED OR PICTURE FRAMES, NON-FIRE RATED OR 4 HOUR FIRE RATED. PANELS ARE ALSO AVAILABLE WITH UP TO 46dB RATING.			
Standard Panels			
73811			
0664	Metal Door Panel with Picture Frame (EX/MT/PF)	300 x 300	97.33
0895	Metal Door Panel with Picture Frame (EX/MT/PF)	450 x 450	116.48
0899	Metal Door Panel with Picture Frame (EX/MT/PF)	600 x 600	123.59
0920	Metal Door Panel with Picture Frame (EX/MT/PF)	300 x 300	97.45
0596	Metal Door Panel with Picture Frame (EX/WD/PF)	450 x 450	115.68
0718	Metal Door Panel with Picture Frame (EX/WD/PF)	600 x 600	124.63
0702	Plasterboard Door with Beaded Frame (EX/PB/SB)	300 x 300	113.30
0722	Plasterboard Door with Beaded Frame (EX/PB/SB)	450 x 450	131.56
0706	Plasterboard Door with Beaded Frame (EX/PB/SB)	600 x 600	142.75
Loft Panels			
9073	Fire Rated Loft panels (Part L Compliant) (EX/LOFT/PF/FD)	530 x 740	102.66
9075	Fire Rated Loft panels (Part L Compliant) (EX/LOFT/PF/FD)	555 x 655	99.18



SPEEDLINE ACOUSTIC FIRECAPS

CODE	DESCRIPTION	MANUFACTURER REFERENCE	£ PRICE EACH
39609			
0050	For cut out 50-75mm	AFF 109/150	14.99
0075	For cut out 75-100mm	AFF 109/200	15.99
0100	For cut out 100-140mm	AFF 109/250	20.35
0140	For cut out 140-250mm	AFF 109/300	32.30
0144	For cut out 140 - 270mm	AFF 109/350	34.99



KNAUF INSULATION

ROCKSILK FIRETECH SLAB - PLAIN

CODE	THICKNESS (MM)	LENGTH (MM)	WIDTH (MM)	£ PRICE PER BOARD	£ PRICE PER M ²
12020					
0200	20	1800	1200	21.87	10.12
0251	25	1800	1200	27.37	12.67
0301	30	1800	1200	33.80	15.19
0351	35	1800	1200	38.24	17.70
0401	40	1800	1200	43.69	20.23

Extra charge for foil or scrim facing £1.35/m² nett. Other thicknesses of Firetech 160 are available, contact your local branch for details.

ROCKSILK FIRETECH ACCESSORIES

CODE	DESCRIPTION (MM)	LENGTH /1000	QUANTITY EACH	£ PRICE TUB	£ PRICE PER ITEM
12020					
9105	Firetech Screws	50	1000	47.21	-
9106	Firetech Screws	65	1000	52.85	-
9107	Firetech Screws	75	1000	60.42	-
9109	Firetech Screws	90	1000	71.75	-
9110	Firetech Screws	110	1000	83.08	-
	Firetech Adhesive (10L)	-	-	-	39.71

KNAUF FIREBOARD

CODE	THICKNESS (MM)	LENGTH (MM)	WIDTH (MM)	£ PRICE PER BOARD	£ PRICE PER M ²
12211					
0155	15	2400	1200	61.91	21.88
0195	20	1800	1200	54.74	29.62
0255	25	1800	1200	66.55	31.38
0305	30	1800	1200	77.17	36.36

KNAUF FIREBOARD ACCESSORIES

CODE	SIZE (MM)	PALLET QUANTITY	PACK QUANTITY	£ PRICE PER PACK	£ PRICE PER TUB	£ PRICE PER LM
12211						
	UniFlott Finisher	25kg Bag	-	-	POA	-
9250	Fireboard Gripper Screws	50	1,000	55.14	-	-
9254	Fireboard Gripper Screws	60	1,000	65.93	-	-

ROCKSILK SMOKE AND FIRE BARRIER

CODE	THICKNESS (MM)	LEGS (M)	WIDTH (MM)	AREA PER ROLL (M ²)	£ PRICE PER M ²
12211					
0500	50	4	900	3.6	68.01
0503	50	4	2 x 300	2.4	68.01
	50	4	2 x 400	3.2	POA

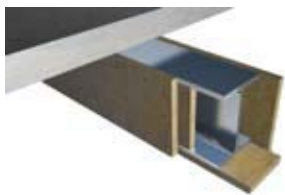
Foil faced one side and two sides is available – check branch for details.

ROCKSILK FIRETECH DRY FIX NOGGIN SLAB

CODE	THICKNESS (MM)	LENGTH (MM)	WIDTH (MM)	SLAB PER PALLET	AREA PER PALLET M ²	£ PRICE PER BOARD	£ PRICE PER M ²
12020							
8030	30	1800	1200	36	77.76	54.04	25.02
8040	40	1800	1200	28	60.48	72.04	33.35
8050	50	1800	1200	22	47.52	89.08	41.24
8060	60	1800	1200	18	38.88	105.86	49.01

ROCKSILK PYRODUCT SLAB

CODE	THICKNESS (MM)	LENGTH (MM)	WIDTH (MM)	SLAB PER PALLET	AREA PER PALLET M ²	PACKS PER PALLET	£ PRICE PER BOARD	£ PRICE PER M ²
12201								
0451	45	1200	600	4	2.88	12	88.78	123.31
0900	90	1200	600	2	1.44	12	90.55	125.77



VERSAPANEL® - CLASS 0 CEMENT BONDED PARTICLE BOARD

CODE	THICKNESS (MM)	LENGTH (MM)	WIDTH (MM)	WEIGHT KG PER M ² (APPROX)	NO. PER PALLET	£ PRICE PER BOARD	£ PRICE PER M ²
FOR INTERNAL & EXTERNAL APPLICATIONS TO FLOORS, WALLS OR CEILINGS. ROT, FIRE, IMPACT AND MOISTURE RESISTANT. THREE TYPES OF FINISHES AVAILABLE: UNSANDED, SANDED AND CALIBRATED. PRICES SHOWN ARE FOR UNSANDED FINISH							
39518							
0065	6	2400	1200	7.5	85	25.80	8.96
0087	8	2400	1200	10	57	22.55	7.83
0104	10	2400	1200	12.5	55	27.53	9.56
0105	10	3050	1220	12.5	50	39.51	10.62
0121	12	2400	1200	15.4	46	32.98	11.45
0126	12	3050	1220	15.4	37	47.36	12.73
0168	16	2400	1200	20	37	43.66	15.16
0186	18	2400	1200	22.5	28	49.65	17.24

Range of other sizes available on request.

VERSAFIRE® - A1-NON-COMBUSTIBLE BUILDING BOARD

A1 - NON COMBUSTIBLE BOARD IN ACCORDANCE WITH BS EN 1716: 2002 AND 1182: 2002. FOR INTERNAL & EXTERNAL APPLICATIONS TO FLOORS, WALLS OR CEILINGS. UP TO 240MINS FIRE RESISTANCE. ROT, IMPACT AND MOISTURE RESISTANT.

39614							
0064	6	2400	1200	6.6	85	44.21	15.35
0100	9	2400	1200	9.9	65	66.30	23.02
0123	12	2400	1200	13.2	55	88.39	30.69

VERSALINER™ JPM - CLASS 0 GYPSUM FIBREBOARD

HIGH PERFORMANCE CLASS 0 GYPSUM FIBREBOARD FOR INTERNAL USE AS A DRY LINING BOARD TO TILE-BACKER PANEL. FOR APPLICATIONS REQUIRING GOOD ACOUSTIC PERFORMANCE, ROT/FIRE/MOISTURE RESISTANCE OR SEAMLESS FINISH.

39626							
0060	6	2400	1200	6.9	85	20.10	6.98
0010	10	2400	1200	11.5	53	29.66	10.30
0125	12.5	2400	1200	14.4	42	40.18	13.95

VERSA WEATHER PRO-L™ - CLASS 0 CALCIUM SILICATE BOARD

FOR INTERNAL OR EXTERNAL APPLICATIONS, VERSA WEATHER PRO-L CAN BE USED FOR A WIDE RANGE OF APPLICATIONS BECAUSE OF ITS EASY WORKING, FIXING AND DECORATING CHARACTERISTICS.

96560							
0060	6	2400	1200	7.8	100	26.70	9.27
0090	9	2400	1200	11.7	75	40.29	13.99
0120	12	2400	1200	15.6	50	53.71	18.65

VERSA SOBEN FP-900™ - A1-NON-COMBUSTIBLE CALCIUM SILICATE BOARD

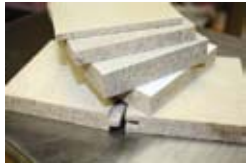
FOR INTERNAL OR EXTERNAL APPLICATIONS, VERSA SOBEN FP-900 IS A HIGH PERFORMANCE BOARD FOR APPLICATIONS REQUIRING HIGH FIRE RESISTANCE, IMPACT, ROT, DAMP AND HUMIDITY.

62117							
9090	9	2400	1200	8.1	75	49.25	17.10

RENDABOARD™ - CLASS 0 BUILDING BOARD

FOR INTERNAL OR EXTERNAL APPLICATIONS, RENDABOARD HAS BEEN DEVELOPED AS A DIRECT RENDER BOARD (SUBJECT TO APPLICATORS APPROVAL). RENDABOARD IS RESISTANT TO FIRE, IMPACT, ROT, MOISTURE AND HAS GOOD ACOUSTIC PERFORMANCE.

39628							
0090	9	2400	1200	9.9	65	37.32	12.96
0120	12	2400	1200	13.2	55	49.77	17.28



FIREHALT FIRE CURTAIN & ACCESSORIES

CODE	DESCRIPTION	SIZE	ROLL SIZE	UNIT	£ PRICE PER M ²
39594					
2000	Firehalt SF (white & green)	25.0m x 1.2m	30m ²	1 roll	16.89
	Firehalt SF (white only)	25.0m x 2.05m	51.25m ²	1 roll	16.89
	120 minutes smoke & flame barrier				
1000	Firehalt Gold	7.0m x 1.2m	8.4m ²	1 roll	35.54
	120 minutes integrity 38 minutes insulation Cavity Fire Barrier				
1010	Firehalt 60/30	7.0m x 1.2m	8.4m ²	1 roll	21.00
	60 minutes integrity 30 minutes insulation Cavity Fire Barrier				
2000	Firehalt SF	25.0m x 1.2m	30m ²	1 roll	17.57
	120 minutes integrity				

FIREHALT CURTAIN FIXINGS

CODE	DESCRIPTION	SIZE	LENGTH	UNIT	£ PRICE PER M ²
39594					
	Galvanised angle	25mm x 25mm x 0.5mm	3.6m	1	5.38
	Galvanised stud	50mm x 35mm x 0.5mm	2.4m	1	5.85
4338	Self drilling screw	38mm x 4mm		1000 per box	39.23
4120	Staple gun	suitable for 10mm staples		1	72.04
4121	Galvanised staples	10mm		5000 per box	13.23

PENETRATION ACCESSORIES

CODE	DESCRIPTION (CLOSED)	WIDTH	LENGTH	UNIT	£ PRICE PER SINGLE	£ PRICE PER 5 LENGTHS	£ PRICE PER 10 LENGTHS
39594							
4010	SF Spider	35mm	1250mm	1	41.29	37.53	35.66
4020	Gold Spider	65mm	1250mm	1	53.09	48.30	45.87
4030	Stainless steel banding (Reel)	10mm x 30m	On plastic wind out reel		63.70		
4040	Lock			50 per box	66.91		

FIREHALT GAP SEAL TAPE

CODE	DESCRIPTION	INITIAL THICKNESS	WIDTH	LENGTH	UNIT	£ PRICE PER ROLL
39594						
4050	Gap seal tape 265	8mm	140mm	5m	1	38.53
4055	Gap seal tape 265	8mm	140mm	10m	1	73.22
4060	Gap seal tape 465	14mm	140mm	5m	1	46.50
4065	Gap seal tape 465	14mm	140mm	10m	1	88.33

PIPE FIRE SLEEVES

CODE	PRODUCT DESCRIPTION	£ PRICE PER ITEM
FOR FIRE & ACOUSTIC PROTECTION OF METAL & PLASTIC PIPES WHICH PASS THROUGH WALLS & FLOORS.		
37030		
0015	Pipe Fire Sleeve to suit 15mm Pipe (300mm Long)	12.66
0022	Pipe Fire Sleeve to suit 22mm Pipe (300mm Long)	13.10
0028	Pipe Fire Sleeve to suit 28mm Pipe (300mm Long)	14.06
0035	Pipe Fire Sleeve to suit 35mm Pipe (300mm Long)	14.14
0042	Pipe Fire Sleeve to suit 42mm Pipe (300mm Long)	15.52
0048	Pipe Fire Sleeve to suit 48mm Pipe (300mm Long)	16.02
0054	Pipe Fire Sleeve to suit 54mm Pipe (300mm Long)	16.50
0060	Pipe Fire Sleeve to suit 60mm Pipe (300mm Long)	16.80
0067	Pipe Fire Sleeve to suit 67mm Pipe (300mm Long)	16.98
0076	Pipe Fire Sleeve to suit 76mm Pipe (300mm Long)	18.04
0080	Pipe Fire Sleeve to suit 80mm Pipe (300mm Long)	18.20
0089	Pipe Fire Sleeve to suit 89mm Pipe (300mm Long)	20.14
0102	Pipe Fire Sleeve to suit 102mm Pipe (300mm Long)	21.72
0108	Pipe Fire Sleeve to suit 108mm Pipe (300mm Long)	21.84
0110	Pipe Fire Sleeve to suit 110mm Pipe (300mm Long)	23.04
0125	Pipe Fire Sleeve to suit 125mm Pipe (300mm Long)	24.88
0133	Pipe Fire Sleeve to suit 133mm Pipe (300mm Long)	25.54
0140	Pipe Fire Sleeve to suit 140mm Pipe (300mm Long)	26.08
0160	Pipe Fire Sleeve to suit 160mm Pipe (300mm Long)	27.92
0169	Pipe Fire Sleeve to suit 169mm Pipe (300mm Long)	29.12

150mm and 200mm also available

FIRE & ACOUSTIC CABLE BASKET SLEEVES

CODE	PRODUCT DESCRIPTION	£ PRICE PER ITEM
FOR FIRE & ACOUSTIC PROTECTION OF CABLE TRAYS AND BASKETS WHICH PASS THROUGH WALLS & FLOORS.		
37024		
0050	Fire & Acoustic Cable Basket Sleeve 50 x 54/30mm	12.44
0075	Fire & Acoustic Cable Basket Sleeve 75 x 54/30mm	14.74
0100	Fire & Acoustic Cable Basket Sleeve 100 x 54/30mm	17.76
0150	Fire & Acoustic Cable Basket Sleeve 150 x 54/30mm	23.08
0200	Fire & Acoustic Cable Basket Sleeve 200 x 54/30mm	31.68
0300	Fire & Acoustic Cable Basket Sleeve 300 x 54/30mm	41.38
0450	Fire & Acoustic Cable Basket Sleeve 450 x 54/30mm	58.96
5000	Fire & Acoustic Cable Basket Infill Material	17.76

SWITCH BOX COVERS & INSERTS

CODE	PRODUCT DESCRIPTION	£ PRICE PER ITEM
FIRE & ACOUSTIC RATED PROTECTION OF SOCKET, SWITCH & DRYLINING BOXES IN WALLS.		
37025		
0010	Single Switch Box Cover	2.16
0012	Double Switch Box Cover	3.33
0035	Single Switch Box Insert - 35mm Deep Boxes	1.50
0037	Double Switch Box Insert - 35mm Deep Boxes	2.25
0100	Single Switch Box Insert - 47mm Deep Boxes	1.95
0200	Double Switch Box Insert - 47mm Deep Boxes	3.00

VENT DUCT FIRE SLEEVES

CODE	PRODUCT DESCRIPTION	£ PRICE PER ITEM
PREVENTS THE PASSAGE OF FIRE THROUGH PVC VENT DUCTING IN FIRE RATED PARTITIONS.		
37026		
0110	Vent Duct Fire Sleeve to suit 110 x 54mm	11.92
0150	Vent Duct Fire Sleeve to suit 150 x 70mm	14.52
0204	Vent Duct Fire Sleeve to suit 204 x 60mm	16.90
0215	Vent Duct Fire Sleeve to suit 215 x 25mm	15.60
0220	Vent Duct Fire Sleeve to suit 220 x 55mm	17.48
0225	Vent Duct Fire Sleeve to suit 225 x 25mm	16.14
0234	Vent Duct Fire Sleeve to suit 234 x 29mm	16.82
0300	Vent Duct Fire Sleeve to suit 300 x 25mm	20.16
0308	Vent Duct Fire Sleeve to suit 308 x 29mm	20.80



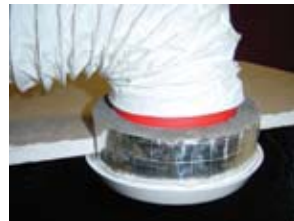
VENT DUCT WRAPS

CODE	PRODUCT DESCRIPTION	£ PRICE PER ITEM
PREVENTS THE PASSAGE OF FIRE THROUGH PVC VENT DUCTING IN FIRE RATED BLOCKWORK WALLS.		
37031		
0110	Vent Duct Wrap to suit 110 x 54mm Vent Duct	4.16
0150	Vent Duct Wrap to suit 150 x 70mm Vent Duct	6.94
0180	Vent Duct Wrap to suit 180 x 90mm Vent Duct	8.54
0204	Vent Duct Wrap to suit 204 x 60mm Vent Duct	8.36
0215	Vent Duct Wrap to suit 215 x 25mm Vent Duct	6.08
0220	Vent Duct Wrap to suit 220 x 55mm Vent Duct	8.72
0225	Vent Duct Wrap to suit 225 x 25mm Vent Duct	6.70
0300	Vent Duct Wrap to suit 300 x 25mm Vent Duct	8.24



CEILING FAN FIRE SLEEVES

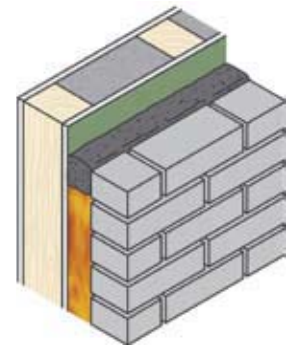
CODE	PRODUCT DESCRIPTION	£ PRICE PER ITEM
MAINTAINS THE FIRE RESISTANCE OF 30 & 60 MINUTE CEILINGS WHEN FITTED WITH RECESSED FANS & VENTS.		
37028		
0080	Ceiling Fan Fire Sleeve to suit 80mm Diameter	6.20
0100	Ceiling Fan Fire Sleeve to suit 100mm Diameter	7.42



VENTILATED FIRE BARRIERS

CODE	PRODUCT DESCRIPTION	£ PRICE PER ITEM
PREVENTS FIRE SPREAD IN THE CAVITY BEHIND RAINSCREEN & CLADDING SYSTEMS.		
37029		
0025	FF102/25 Ventilated Fire Barrier for 25mm cavities	6.62
0050	FF102/50 Ventilated Fire Barrier for 50mm cavities	19.72
1250	FF109/125 Ventilated Fire Barrier for 125mm cavities	36.80

Other cavity sizes also available on request.



LIGHT COVERS & FIRE HOODS

CODE	PRODUCT DESCRIPTION	£ PRICE PER ITEM
FOR FIRE, ACOUSTIC & THERMAL PROTECTION OF RECESSED LIGHTS.		
37032		
0150	Downlighter Cover - 150 x 150mm	8.56
0200	Downlighter Cover - 200 x 200mm	14.56
0250	Downlighter Cover - 250 x 250mm	18.62
0300	Downlighter Cover - 300 x 170mm	28.92
0350	Downlighter Cover - 350 x 230mm	31.56
5000	Loft Cover	8.80
1060	Luminaire Cover 600 x 600mm	28.92
1200	Luminaire Cover 1200 x 600mm	42.08



FIRESTEM INTUMESCENT MASTIC

CODE	PRODUCT	SIZE	FIRE RATING MAXIMUM	£ PRICE EACH
39588				
0010	Intumescent mastic	310ml cartridge	4 hour	2.03

HIGH PERFORMANCE WATER BASED ACRYLIC MASTIC SUITABLE FOR FILLING GAPS UP TO 35MM AND SEALING AROUND PENETRATIONS AND JOINTS IN FIRE PROTECTION BOARDS. FOR INTERNAL USE ONLY.

FIRESTEM FIRE BARRIERS

HIGH DENSITY MINERAL WOOL FIBRE BATTS COATED BOTH SIDES WITH A FLEXIBLE ABLATIVE COATING TO PROVIDE SMOKE AND FIRE BARRIERS IN COMPARTMENT WALLS AND FLOORS.

39585				
0050	Double sided fire barrier	1200 x 600 x 50mm	4 hour	23.04

FIRESTEM ABLATIVE COATINGS

FOR USE WITH COATED FIRE BARRIERS.

39587				
0050		5kg tubs		25.28

FIRESTEM FIRE CEMENT

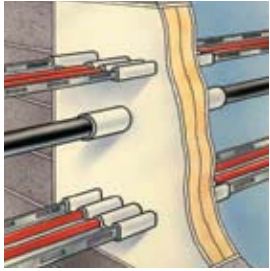
FIRESTOP MORTAR POWDER, WHEN MIXED WITH WATER, PRODUCES A TROWEL OR POURING GRADE MORTAR FOR LOAD, OR NON LOAD BEARING FIRE BARRIER SEALS THROUGH OPENINGS IN FLOORS AND WALLS.

39586				
0020		25kg	4 hour	24.11

FIRESTEM PIPE COLLARS

FOR USE AROUND SYNTHETIC PIPES PENETRATING A COMPARTMENT WALL OR FLOOR. IN A FIRE SITUATION THE INTUMESCENT MATERIAL EXPANDS TO SEAL OFF THE PIPE, THEREBY PREVENTING THE SPREAD OF SMOKE AND FIRE.

39580				
0038	Pipe collar	38mm	2 hour	12.11
0040	Pipe collar	40mm	2 hour	12.11
0055	Pipe collar	55mm	2 hour	11.51
0063	Pipe collar	63mm	2 hour	12.88
0075	Pipe collar	75mm	2 hour	14.40
0082	Pipe collar	82mm	2 hour	14.40
0090	Pipe collar	90mm	2 hour	15.29
0110	Pipe collar	110mm	2 hour	11.51
0125	Pipe collar	125mm	2 hour	17.37
0160	Pipe collar	160mm	2 hour	28.94
39581				
0038	Pipe collar	38mm	4 hour	12.75
0040	Pipe collar	40mm	4 hour	12.75
0055	Pipe collar	55mm	4 hour	12.11
0063	Pipe collar	63mm	4 hour	13.65
0075	Pipe collar	75mm	4 hour	15.98
0082	Pipe collar	82mm	4 hour	15.98
0090	Pipe collar	90mm	4 hour	17.37
0110	Pipe collar	110mm	4 hour	12.40
0125	Pipe collar	125mm	4 hour	19.43
0160	Pipe collar	160mm	4 hour	30.18



FIRESTEM FIRE STOP PENETRATING SEALS

029

FIRESTEM PIPE WRAPS

CODE	PRODUCT	SIZE	FIRE RATING MAXIMUM	£ PRICE EACH
39582				
0055	Pipe wrap	55mm	2 hour	3.24
0063	Pipe wrap	63mm	2 hour	3.72
0082	Pipe wrap	82mm	2 hour	5.09
0110	Pipe wrap	110mm	2 hour	5.65
0125	Pipe wrap	125mm	2 hour	7.51
0160	Pipe wrap	160mm	2 hour	15.98
39583				
0055	Pipe wrap	55mm	4 hour	3.37
0063	Pipe wrap	63mm	4 hour	4.62
0082	Pipe wrap	82mm	4 hour	6.90
0110	Pipe wrap	110mm	4 hour	8.14
0160	Pipe wrap	160mm	4 hour	20.25

FIRESTEM FIRE PILLOWS

FOR USE IN TEMPORARY OR PERMANENT FIRE BARRIERS AROUND ALL TYPES OF SERVICES.

39584				
0100	Fire pillow	300 x 100 x 35mm	4 hour	6.00
0150	Fire pillow	300 x 150 x 35mm	4 hour	6.90
0200	Fire pillow	300 x 200 x 35mm	4 hour	8.14

FIRESTEM EXPANSION JOINTS

A COMPRESSIBLE FIRE RESISTANT FOAM BONDED ON BOTH SIDES TO A GRAPHITE BASED INTUMESCENT, SUPPLIED IN 1 METRE LENGTHS.

39589				
0020	GF2	8-12mm	2 hour	2.63
0050	GF5	13-25mm	2 hour	3.72
0080	GF8	26-50mm	2 hour	7.84

FIRESTEM DOORSTRIPS

WHERE A NEW OR EXISTING DOOR NEEDS TO BE FITTED WITH A SMOKE AND/OR FIRE SEAL. STANDARD COLOURS WHITE OR BROWN, OTHER COLOURS AVAILABLE ON REQUEST.

39590				
0030	GDS 30 FS	10 x 4	30 minutes	1.25
0035	GDS 30 F	10 x 4	30 minutes	0.97
0060	GDS 60 FS	10 x 4	60 minutes	2.75
0065	GDS 60 F	10 x 4	60 minutes	2.34



UNIVERSAL BEAMS: A/V FACTORS



SERIAL SIZE (MM)	MASS (KG/M)	DEPTH D (MM)	WIDTH B (MM)	AREA A (CM ²)	2-SIDED (M ²)	3-SIDED (M ²)	4-SIDED (M ²)	
914 x 305	289	926.6	307.8	368.80	35	60	65	
	253	918.5	305.5	322.80	40	65	75	
	224	910.3	304.1	285.20	45	75	85	
	201	903.0	303.4	256.40	45	80	95	
838 x 292	226	850.9	293.8	288.70	40	70	80	
	194	840.7	292.4	247.10	45	80	90	
	176	834.9	291.6	224.10	50	90	100	
762 x 267	197	769.6	268.0	250.70	40	70	85	
	173	762.0	266.7	220.40	45	80	95	
	147	753.9	265.3	188.00	55	95	110	
686 x 254	170	692.9	255.8	216.50	45	75	90	
	152	687.6	254.5	193.80	50	85	95	
	140	683.5	253.7	178.60	50	90	105	
	125	677.9	253.0	159.60	60	100	115	
610 x 305	238	633.0	311.5	303.70	30	50	60	
	179	617.5	307.0	227.90	40	70	80	
	149	609.6	304.8	190.10	50	80	95	
610 x 229	140	617.0	230.1	178.30	50	80	95	
	125	611.9	229.0	159.50	55	90	105	
	113	607.3	228.2	144.40	60	100	115	
	101	602.2	227.6	129.10	65	110	130	
533 x 210	122	544.6	211.9	155.70	50	85	95	
	109	539.5	210.7	138.50	55	95	110	
	101	536.7	210.1	129.70	60	100	115	
	92	533.1	209.3	117.70	65	110	125	
	82	528.3	208.7	104.40	70	120	140	
457 x 191	98	467.4	192.8	125.20	55	90	105	
	89	463.6	192.0	113.90	60	100	115	
	82	460.2	191.3	104.50	60	105	125	
	74	457.2	190.5	94.98	70	115	135	
	67	453.6	189.9	85.44	75	130	150	
457 x 152	82	465.1	153.5	104.40	60	105	120	
	74	461.3	152.7	94.99	65	115	130	
	67	457.2	151.9	85.41	70	125	145	
457 x 152	60	454.7	152.9	75.93	80	140	160	
	52	449.8	152.4	66.49	90	160	180	
	406 x 178	74	412.8	179.7	94.95	60	105	125
406 x 178	67	409.4	178.8	85.49	70	115	140	
	60	406.4	177.8	76.01	75	130	155	
	54	402.6	177.6	68.42	85	145	170	
	406 x 140	46	402.3	142.4	58.96	90	160	185
406 x 140	39	397.3	141.8	49.40	110	190	220	
	356 x 171	67	364.0	173.2	85.42	65	105	125
	57	358.6	172.1	72.18	75	125	145	
356 x 171	51	355.6	171.5	64.58	80	135	165	
	45	352.0	171.0	56.96	90	155	185	
	356 x 127	39	352.8	126.0	49.40	95	170	195
356 x 127	33	348.5	125.4	41.83	115	195	225	
	305 x 165	54	310.9	166.8	68.38	70	115	140
305 x 165	46	307.1	165.7	58.90	80	130	160	
	40	303.8	165.1	51.50	90	150	180	
	305 x 127	48	310.4	125.2	60.83	70	125	145
305 x 127	42	306.6	124.3	53.18	80	140	160	
	37	303.8	123.5	47.47	90	155	180	
	305 x 102	33	312.7	102.4	41.77	100	175	200
305 x 102	28	308.9	101.9	36.30	115	200	225	
	25	304.8	101.6	31.39	130	225	260	

UNIVERSAL BEAMS: A/V FACTORS (Continued)

SERIAL SIZE (MM)	MASS (KG/M)	DEPTH D (MM)	WIDTH B (MM)	AREA A (CM ²)	2-SIDED (M ¹)	3-SIDED (M ¹)	4-SIDED (M ¹)
254 x 146	43	259.6	147.3	55.10	75	120	150
	37	256.0	146.4	47.45	85	140	170
	31	251.5	146.1	40.00	100	160	200
254 x 102	28	260.4	102.1	36.19	100	170	200
	25	257.0	101.9	32.17	110	190	225
	22	254.0	101.6	28.42	125	215	250
203 x 133	30	206.8	133.8	38.00	90	145	180
	25	203.2	133.4	32.31	105	165	210
203 x 102	23	203.2	101.6	29.00	105	175	210
178 x 102	19	177.8	101.6	24.20	115	190	230
152 x 89	16	152.4	88.9	20.50	120	190	235
127 x 76	13	127.0	76.2	16.80	120	195	240

JOISTS: A/V FACTORS



254 x 203	81.85	254.0	203.2	104.4	45	70	90
254 x 114	37.20	254.0	114.3	47.4	80	130	155
203 x 152	52.09	203.2	152.4	66.4	55	85	105
203 x 102	25.33	203.2	101.6	32.3	95	155	190
178 x 102	21.54	177.8	101.6	27.4	100	165	205
152 x 127	37.20	152.4	127.0	47.5	60	90	120
152 x 89	17.09	152.4	88.9	21.8	110	180	220
152 x 76	17.86	152.4	76.2	22.8	100	165	200
127 x 114	29.76	127.0	114.3	37.3	65	100	130
127 x 114	26.79	127.0	114.3	34.1	70	110	140
127 x 76	16.37	127.0	76.2	21.0	95	155	195
127 x 76	13.36	127.0	76.2	17.0	120	195	240
114 x 114	26.79	114.3	114.3	34.4	65	100	135
102 x 102	23.07	101.6	101.6	29.4	70	105	140
102 x 64	9.65	101.6	63.5	12.3	135	215	270
102 x 44	7.44	101.6	44.4	9.5	155	260	305
89 x 89	19.35	88.9	88.9	24.9	70	105	145
76 x 76	14.67	76.2	80.0	19.1	80	120	165
76 x 76	12.65	76.2	76.2	16.3	95	140	185

UNIVERSAL COLUMNS: A/V FACTORS



SERIAL SIZE (MM)	MASS (KG/M)	DEPTH D (MM)	WIDTH B (MM)	AREA A (CM ²)	2-SIDED (M')	3-SIDED (M')	4-SIDED (M')
356 x 406	634	474.7	424.1	808.1	10	15	20
	551	455.7	418.5	701.8	10	20	25
	467	436.6	412.4	595.5	15	20	30
	393	419.1	407.0	500.9	15	25	35
	340	406.4	403.0	432.7	20	30	35
	287	393.7	399.0	366.0	20	30	45
	235	381.0	395.0	299.8	25	40	50
356 x 368	202	374.7	374.4	257.9	30	45	60
	177	368.3	372.1	225.7	35	50	65
	153	362.0	370.2	195.2	40	55	75
	129	355.6	368.3	164.9	45	65	90
305 x 305	283	365.3	321.8	360.4	20	30	40
	240	352.6	317.9	305.6	20	35	45
	198	339.9	314.1	252.3	25	40	50
	158	327.2	310.6	201.2	30	50	65
	137	320.5	308.7	174.6	35	55	70
	118	314.5	306.8	149.8	40	60	85
	97	307.8	304.8	123.3	50	75	100
254 x 254	167	289.1	264.5	212.4	25	40	50
	132	276.4	261.0	167.7	30	50	65
	107	266.7	258.3	136.6	40	60	75
	89	260.4	255.9	114.0	45	70	90
	73	254.0	254.0	92.9	55	80	110
203 x 203	86	222.3	208.8	110.1	40	60	80
	71	215.9	206.2	91.1	45	70	95
	60	209.6	205.2	75.8	55	80	110
	52	206.2	203.9	66.4	60	95	125
	46	203.2	203.2	58.8	70	105	140
152 x 152	37	161.8	154.4	47.4	65	100	135

CHANNELS: A/V FACTORS



SERIAL SIZE (MM)	MASS (KG/M)	DEPTH D (MM)	WIDTH B (MM)	AREA A (CM ²)	2-SIDED (M')	3-SIDED (M')	3-SIDED (M')	4-SIDED (M')
432 x 102	65.54	431.8	101.6	83.49	65	115	75	130
381 x 102	55.10	381.0	101.6	70.19	70	125	85	140
305 x 102	46.18	304.8	101.6	58.83	70	120	85	140
305 x 89	41.69	304.8	88.9	53.11	75	130	90	150
254 x 89	35.74	254.0	88.9	45.52	75	130	95	150
254 x 76	28.29	254.0	76.2	36.03	90	160	115	185
229 x 89	32.76	228.6	88.9	41.73	75	130	95	150
229 x 76	26.06	228.6	76.2	33.20	90	160	115	185
203 x 89	29.78	203.2	88.9	37.94	75	130	100	155
203 x 76	23.82	203.2	76.2	30.34	90	160	115	185
178 x 89	26.81	177.8	88.9	34.15	80	130	105	155
178 x 76	20.84	177.8	76.2	26.54	95	165	125	190
152 x 89	23.84	152.4	88.9	30.36	80	130	110	160
152 x 76	17.88	152.4	76.2	22.77	100	165	135	200
127 x 64	14.90	127.0	63.5	18.98	100	165	135	200
102 x 51	10.42	101.6	50.8	13.28	115	190	155	230
76 x 38	6.70	76.2	38.1	8.53	135	225	180	270

Full tables of structural sections can be found in the Promat Passive Fire Protection Handbook.

BOARD THICKNESS (REQUIRED FOR STRUCTURAL STEEL)

033

PROMAT VERMICULUX® - LIMITING STEEL TEMPERATURE 550°C

FIRE RESISTANCE (MINUTES)	BOARD THICKNESS (MM)								
	20	25	30	35	40	45	50	55	60
30	260								
60	260								
90	202	260							
120	114	159	215	260					
180	61	81	103	128	156	189	227	260	
240	-	54	67	82	98	115	134	155	178

Maximum A/V section factor (m⁻¹)

PROMAT SUPALUX® - LIMITING STEEL TEMPERATURE 550°C

FIRE RESISTANCE (MINUTES)	BOARD THICKNESS (MM)			
	6	9	12	15
30	260			
60	64	107	158	224
90	-	52	73	96
120	-	-	47	61

Maximum A/V section factor (m⁻¹)

- Notes:**
1. If an A/V factor falls on a line between two thicknesses, select the lower thickness.
 2. Any thickness greater than the minimum required can be used if appropriate.

PROMAT PROMATECT® - 250

BEAMS - LIMITING STEEL TEMPERATURE 550c

FIRE RESISTANCE (MINUTES)	BOARD THICKNESS (MM)									
	12	15	18	20	22	25	30 (15+15)	33 (15+18)	35 (15+20)	38 (18+20)
30	260									
60	177	260								
90		102	135	162	192	249	260			
120				92	106	129	176	211	238	260
150						87	114	132	146	168

PROMAT PROMATECT® - 250

COLUMNS - LIMITING STEEL TEMPERATURE 550c

FIRE RESISTANCE (MINUTES)	BOARD THICKNESS (MM)									
	12	15	18	20	22	25	30 (15+15)	33 (15+18)	35 (15+20)	38 (18+20)
30	260									
60	209	260								
90	82	114	153	185	223	260				
120		68	87	102	118	145	201	243	260	
150			61	70	80	96	126	147	163	190

GLASROC F

FIRE RESISTANCE (MINUTES)	BOARD THICKNESS (MM)				
	15	20	25	30	35
30	260				
60	240	260			
90	-	150	250	260	
120	-	-	130	140	260

Maximum A/V section factor (m⁻¹)

Note: 35mm board should be made up of two layers, 15mm plus 20mm thick.

BOARD THICKNESS (REQUIRED FOR STRUCTURAL STEEL)**KNAUF FIREBOARD**

	15	20	25	30	35	40	45
30	260						
60	260						
90	88	146	242	260			
120	-	-	95	131	179	247	260

Maximum A/V section factor (m⁻¹)**KNAUF ROCKSILK FIRETECH 160 FOR STEEL COLUMNS**

	20	25	30	35	40	45	50	55	60	65	70	75	80	85	90	95	100	105	110	
30	260																			
60	260																			
90	133	170	207	246	260															
120	78	98	119	140	162	184	207	230	254	260										
180	-	-	4	75	87	98	110	121	133	145	157	169	182	194	207	219	232	245	260	
240	-	-	44	52	59	67	75	82	90	98	106	114	122	130	138	147	155	163	172	

Maximum A/V section factor (m⁻¹)**KNAUF ROCKSILK FIRETECH 160 FOR STEEL BEAMS**

	20	25	30	35	40	45	50	55	60	65	70	75	80	85	90	95	100	105	110	
30	260																			
60	260																			
90	120	189	232	260																
120	71	107	130	153	177	201	226	251	260											
180	-	-	69	81	93	105	117	130	143	156	169	182	195	209	222	236	250	260		
240	-	-	47	55	63	71	79	88	96	104	113	122	130	139	148	157	166	175	184	

Maximum A/V section factor (m⁻¹)**ROCKWOOL BEAMCLAD 150 FOR STEEL COLUMNS**

FIRE RESISTANCE (MINUTES)	BOARD THICKNESS (MM)											
	25	30	35	40	45	50	60	70	80	90	100	110
30	260											
60	260											
90	149	207	260									
120	65	83	104	128	155	187	260					
180	-	38	45	54	62	72	92	116	143	176	214	260
240	-	24	29	34	39	44	55	68	81	96	124	129

Maximum A/V section factor (m⁻¹)**ROCKWOOL BEAMCLAD 150 FOR STEEL BEAMS**

	25	30	35	40	45	50	60	70	80	90	100	110
30	260											
60	260											
90	260											
120	96	130	168	216	260							
180	-	50	61	73	85	99	131	170	219	260		
240	-	31	37	43	50	57	73	90	109	131	157	186

Maximum A/V section factor (m⁻¹)**Note:** Thickness can be made up of either one or two layers

PROMAT TD BOARD® - TABLE 1

LIMITING STEEL TEMPERATURE 550°C
 CLIP FIXINGS OR WELDED PIN FIXINGS AND 'DRY JOINTS' WHEN PROTECTING BEAMS SUPPORTING CONCRETE DECKS

FIRE RESISTANCE (MINUTES)	BOARD THICKNESS (MM)							
	25	30	35	40	45	50	55	60
30	260							
60	260							
90	201	260						
120	77	100	126	158	195	240	260	260
180								
240								

Please note: Please contact Promat UK Technical Services Department on 01344 381 400 for further information.

PROMAT TD BOARD® - TABLE 2

LIMITING STEEL TEMPERATURE 620°C
 CLIP FIXINGS OR WELDED PIN FIXINGS AND 'DRY JOINTS' WHEN PROTECTING BEAMS (LOADING IN ACCORDANCE WITH BS 5950-8)

FIRE RESISTANCE (MINUTES)	BOARD THICKNESS (MM)							
	25	30	35	40	45	50	55	60
30	260							
60	260							
90	260							
120	95	124	159	200	251	260	260	260
180								
240								

- Notes:**
1. The above thicknesses have been determined using a steel failure temperature of 550°C (Table 1) and 620°C (Table 2). For other temperatures please consult Promat Technical Department.
 2. The thicknesses given in Table 1 are normally required for vertical steel columns and for horizontal steel beams not physically connected to a concrete deck or a profiled steel deck with a concrete topping.
 3. The thicknesses given in Table 2 can only be used to protect horizontal steel beams physically connected and directly supporting a concrete deck or a profiled steel deck with a concrete topping.
 4. Any thickness greater than the minimum required can be used if appropriate.

PROMAT VICUTUBE®

PLEASE CONTACT PROMAT TECHNICAL SERVICES DEPT ON 01344 381400 FOR INFORMATION